



<https://colsterworth.parish.lincolnshire.gov.uk/>

News for the villages of Colsterworth, Woolsthorpe, Stainby, Gunby, North Witham and Lobthorpe

# White Lion

High Street, Colsterworth

**01476 861466**

[www.whitelioncolsterworth.co.uk/](http://www.whitelioncolsterworth.co.uk/)

### Opening Hours

Mon 12 - 9pm	(Food till 8:00)
Tue 6pm - 11pm	(No Food)
Wed 12 - 9pm	(Food till 8:00)
Thu 12 - 11pm	(Food till 9:00)
Fri 12 - 11pm	(Food till 9:00)
Sat 12 - 11pm	(Food till 9:00)
Sun 12 - 8pm	(Food till 6pm)

N.B. Last food orders taken 30 mins before the end of service

**Quiz Night - Thursdays 8pm**

**Senior Citizens Meals - Mondays 12-3pm**  
(Excluding Bank Holidays)

Edited by Stuart Whitcombe    5 Stephenson Close, NG33 5GP    0777 323 0815    InTouchCopy@gmail.com

## Mini Fete

at  
Colsterworth Methodist Church

**Saturday 29<sup>th</sup> June**  
**2pm - 4pm**

A Warm Welcome Awaits  
Homemade cakes  
Refreshments

Books    Jigsaws    Bric-a-brac    Games    Plants

## Colsterworth Sports & Social Club

**8<sup>th</sup> June**  
**D-Day Celebration**

Afternoon Tea (pre-order only)  
£15 for two people  
Contact the club to order by 31<sup>st</sup> May

1940s Musical Atmosphere  
Evening Entertainment

Nora's Food Van  
serving food from 2pm

1940s Dress optional  
Prize for the best dressed

Open at 12 noon

## Colsterworth Father's Day Charity Raffle

Win a fabulous prize for the perfect way to celebrate Father's Day for a special Dad

**£1 per entry in store**

- £25 Dining voucher at The White Lion
- Carvery for 2 at Tallington Lakes
- 2 BBQs and a £30 Co-op voucher

Draw takes place on Friday 14<sup>th</sup> June  
All proceeds to help Barnardo's Children's Charity

### EweMove Sleaford & Grantham

South Rated 5 Star By Local Sellers & Landlords

**EweMove**  
SALES AND LETTINGS

"Hi I'm Rachel, I'm here to help with your property needs."

To Get Your **FREE** Online Valuation Report  
Visit: [www.EweMove.com/GranthamSouth](http://www.EweMove.com/GranthamSouth)  
Or Call 24/7: **01476 858 570**

## The Tollemache Arms

### Buckminster

01476 860477  
[Tollemache-arms.co.uk](http://Tollemache-arms.co.uk)  
[Facebook.com/tollemachebuckminster](https://Facebook.com/tollemachebuckminster)

**Open Bank Holiday Mondays**

*19th century country inn with 4 en-suite rooms, spacious beer garden and open fire. Available to hire for functions.*

# Parish Council Report

Parish Clerk - 01476 861888  
clerk@colsterworthanddistpc.co.uk

## Your headlines from the Parish Council (PC) Meeting 7<sup>th</sup> May 2024

Full minutes and reports are available on the Colsterworth and District Website

(Search "Colsterworth and District Parish Council" and find the agendas and minutes under "Council Business": **Council business – Colsterworth and District Parish Council (lincolnshire.gov.uk)**)

**PUBLIC FORUM:** A summary of the Public Forum, full details can be found on the Parish Council website under council Business.

Cllr C Hainsworth (Chair) welcomed the two members of the public present.

The first to speak stated that they were there to ensure that the Parish Council were aware that the Planning Application for the proposed Anaerobic Digester plant at Gunby had been posted on the SKDC Planning Portal. They had earlier attended the South Witham Parish Council meeting who initially thought that this planning application would not affect South Witham. They commented that the application had gaps and discrepancies for example: -

- It was unknown where the majority of the crop would come from.
- The volume had increased from 120,000 tonne to 130,000 tonne of crop per year.
- Potentially almost 12,000 HGV movements per year.
- New junctions would be created in Gunby for access to the plant. They said that they had submitted mitigating suggestions to ease this.
- Not all information had been submitted on the traffic statement.
- They expressed their frustration in submitting an objection due to the contradictions in the application and the volume of documents that they need to trawl through.

The second member of the public to speak suggested that the solution would be that another location is found such as Gonerby. Cllr C (Chair) Hainsworth confirmed that the Clerk had already requested an extension to the deadline. Which if agreed would take the deadline for comments to after the Parish Council meeting on Tuesday 4<sup>th</sup> June 2024 and that the Parish Council will keep those present informed. The public forum was extended to 7.50pm to allow both members of the public to speak.

### **CHAIR'S REMARKS:**

Chairperson Cllr C Hainsworth had no remarks.

### **Election of Chairman & Election of Vice Chairman**

Chair: Councillor C Hainsworth was unanimously voted as Chair to of the Parish Council.

Vice Chair: Councillor E O'Neill was unanimously voted as Vice Chair of the Parish Council.

Election of lead Councillors for: -

Finance and Administration Committee

Cllrs C Hainsworth, E O'Neill, A Bouvie and C Russell were duly elected.

Environment and Amenities Working Group

Cllr K Vickers volunteered, and other Cllrs would volunteer on an ad hoc basis as and when required.

Footpaths and Highways Working Group

Cllr C Hainsworth volunteered, and other Cllrs would volunteer on an ad hoc basis as and when required.

Planning Committee x 4 Councillors

Cllrs C Hainsworth, C Rowland, D Bellamy and C Russell were duly elected.

## **Lincolnshire County Council and South Kesteven District Councillors Report.**

LCC Cllr C Vernon reported: -

1. They thanked Cllr D Bellamy for sending the photo of the traffic travelling through the High Street, Colsterworth following the closure of the A1 on Friday evening 3<sup>rd</sup> May 2024. They have sent the photo to the LCC Highways Department.
2. Alicia Kearns MP recently raised the subject of the A1 in the House of Commons and has launched a survey on how to make the A1 safer. The survey can be found on the following link. <https://www.aliciakearns.com/a1-survey>. Cllr C Vernon encouraged all Cllrs to complete the survey. Cllr J Clark raised the point that it is what happens in the villages when the A1 is closed that is the issue. There is no Police presence or enforcement. The County Council has no powers of enforcement. A discussion took place on ideas of how to improve the issue. Cllr C Vernon said they would take this forward with LCC and the Police to establish lines of responsibility.
3. Operation SNAP is a portal where photos can be uploaded and viewed and if there is a traffic offence action is taken. Link to Operation SNAP <https://www.lincs.police.uk/police-forces/lincolnshire-police/areas/campaigns/campaigns/op-snap/>

**SKDC Cllr D Bellamy Report:** - Cllr Bellamy gave his report at agenda item 2024.18.

Planning Application S24/0568 - Proposal: Erection of an anaerobic digestion (AD) facility and carbon capture, improvement of existing and part creation of new access track, landscaping and other associated infrastructure.  
Location: Development East Of Sewstern Industrial Estate South Of, Sewstern Road, Gunby, Lincolnshire, NG33 5RD

1. Suggested to compare the Easton Cold Store Planning Application S24/0544. For the redevelopment and updating of an existing waste-water treatment facility and the installation of an anaerobic digestion plant with capacity to produce 5mw of renewable energy with the S24/0568 proposed Anaerobic Digester plant at Gunby.
2. The S24/0568 Planning Application will be called into SKDC Planning Committee.
3. Suggested to look at the SKDC Renewable Energy Criteria
4. Suggested to look at the County Council past similar planning applications.

### **Updates for Council administration**

F & A Committee meeting. Date to be agreed at the May PC Meeting.

Post meeting note. F&A Committee Meeting date agreed, 7pm on 23<sup>rd</sup> May 2024 at the Methodist Church Hall.

### **External Audit**

The Annual Governance and Accountability Report sections 1 & 2 were approved and signed by Chair to the Council Cllr C Hainsworth and the Clerk S Grant.

The following Policies were reviewed and adopted.

CAD Freedom of Information Request

CAD Freedom of Information Decision Template

CAD Nature Trail Risk Assessment

**Finance** - Accounts for payment were approved by Council.

### **Planning Committee Report (No report this month)**

1. Neighbourhood Plan Review update. (Cllr D Bellamy) The review will be picked up after the Local Plan has been agreed.
2. Resolve to comment on the Anaerobic Digester plant planning application at Gunby when the planning application is received by the Parish Council.

It was proposed, seconded and Resolved Unanimously that the Parish Council would submit an objection to the planning application.

### Highways & Footpaths Working Group

Issues raised with Cllr C Vernon.

### Environment & Amenities Working Group Report.

War Memorial Project update (S Grant – Clerk)

Restoration work scheduled to start before the end of May 2024.

### Nature Trail

The Tree Condition Survey is now completed with work planned.

### Clerks Report & day to day business.

1. Footpath 19 Reported to LCCROW for clearing. Ref 2125158. Allocated a Priority 2. The footpath has been swept by the Parish Councils contractor and LCC have inspected the footpath and confirmed the condition is acceptable.

2. A Pre-Contract meeting for the restoration of the War Memorial was held with the Architects PPIY, contractors Pinnacle Conservation and the Parish Council on Friday 12 April at 10:30am. Work to start in May subject to approval from the SKDC Conservation Officer.

3. The Parish Council objection to the SKDC Regulation 18 - Draft Local Plan Review land allocation of SKPR-120 land at the east of Stamford Road with an allocation of a minimum of approximately 70 houses was submitted on 22/04/2024.

4. Previously reported potholes at Stainby Crossroads updated on FMS as a priority. New pothole at the bottom of Stainby Hill reported to FMS.

5. Thank you to the local residents who recently picked up the dog waste bags left on the floor on Old Post Lane and the Nature Trail.

6. December Meeting Minute Ref 2023.136 noted as a S137 £500 towards the shed for pre-loved uniform.

7. The ivy has been removed from the brick bus shelter on Woolsthorpe Road near to the entrance to The Close. Work agreed February Meeting agenda item 2023.144.

8. The leaking standpipe at Stamford Road allotments has been repaired.

9. The Internal audit was completed by LALC on Friday 26th April and the Annual Internal Audit Report for the Annual Governance and Accountability Return signed.

10. The metal gate at Colster Way playing field has been re-attached by a local resident, their brother and tools loaned from another resident at no charge to the Parish Council. Thank you.

### Correspondence received.

Council received details of correspondence received relating to speeding vehicles, lack of police presence, fly tipping, litter, damaged grass verges following the A1 closure and potholes.

### SKDC Planning Applications –

S24/0568 - Proposal: Erection of an anaerobic digestion (AD) facility and carbon capture, improvement of existing and part creation of new access track, landscaping and other associated infrastructure.

Location: Development East Of Sewstern Industrial Estate South Of, Sewstern Road, Gunby, Lincolnshire, NG33 5RD

S24/0701 - Erection of timber double garage. 11 Pasture Close, Colsterworth. NG33 5NA

SKDC Planning Permission -

S24/0306 - Removal of T1 Maple tree. 1 Woodlands Drive, Colsterworth, Lincolnshire, NG33 5NH.

### Date of next Parish Council Meeting

Date of the next Parish Council meeting is Tuesday 4<sup>th</sup> June 2024. Methodist Church Hall, Back Lane, Colsterworth.



12th May 2024

#### PRESS RELEASE

**Work begins on the restoration of Colsterworth War Memorial on the High Street, Colsterworth.**

The project, which is being funded by a **£29,026.48 grant from FCC Communities Foundation and a £3,000.00 contribution from Colsterworth Festival of Remembrance (CFoR)** to restore the grade II listed Colsterworth War Memorial is set to begin following a meeting with the Architect and specialist Contractors earlier this month. The restoration is anticipated to be completed at the end of June 2024.

Councillor Caroline Hainsworth, Chairperson of Colsterworth and District Parish Council is excited that the project is starting to take shape.

She says: **“We know from the support shown by the community that there is a tremendous sense of pride in War Memorial which commemorates the fallen from this area at the two World Wars. This project will preserve the War Memorial for future generations, and it is great to see our vision for this important community asset moving closer to reality. We are extremely grateful for the funding FCC Communities Foundation and CFoR has given us and we’re looking forward to opening to the public.”**

**FCC Communities Foundation is a not-for-profit business that awards grants for community projects through the Landfill Communities Fund.**

**Penny Horne, FCC Communities Foundation grant manager, says: “We’re delighted to be supporting the Colsterworth War Memorial Restoration Project and pleased our funding will be able to help restore this special place for remembrance. FCC Communities Foundation is always happy to consider grant applications for projects that improve local communities and we’re looking forward to this one making a difference very soon.”**

For further press information please contact Sue Grant, Colsterworth & District Parish Clerk.

Tel: 01476-861888 or email [clerk@colsterworthanddistpc.co.uk](mailto:clerk@colsterworthanddistpc.co.uk)

FCC Communities Foundation is a not-for-profit business that awards grants for community, conservation and heritage projects from funds donated by FCC Environment through the Landfill Communities Fund.

[www.fcccommunitiesfoundation.org.uk](http://www.fcccommunitiesfoundation.org.uk) [info@fcccommunitiesfoundation.org.uk](mailto:info@fcccommunitiesfoundation.org.uk)

### Temporary traffic restriction Woolsthorpe By Colsterworth

Please note it will be necessary to impose a temporary restriction as detailed below.

#### Organisation responsible for restriction:

Opals Group

#### Reason for restriction:

Quickline ducting for fibre installation

#### Nature and location of restriction:

Road closure Order -

Newton Way (Between Eastern junction with Woolsthorpe Road & Reads Lane)

Reads Lane

#### Period of restriction:

10/06/2024 - 24/06/2024

(Restrictions to be implemented for 15 days as and when required during this period, signage detailing accurate dates and times will be displayed on site in advance)

#### Alternative route or access arrangements:

Diversion routes and vehicular or pedestrian access arrangements will be signposted.

This information is also available in map form at <https://one.network/>

If you have any queries, or require further information, please contact the LCC Customer Service Centre on **01522 782070**.

WI Meeting 16<sup>th</sup> April 2024

Our newly elected President, Mrs Vanessa Howley, after a delayed start welcomed 25 members and hoped they liked the new format with the previous months minutes and notices now displayed on the notice board. From behind a laden table with an array of Roman pots and ingredients, a middle-class local woman from the Corantini, dressed in a full length 2-layer plaid outfit held together with brooches at the shoulders, hair braided, and with a torque necklace about her neck. This was our speaker Chris Carr a history interpreter, who had come to demonstrate an ancient Roman dish from a Roman gourmet, Apicius, taken from a cook book attributed to him. Very like Heston Blumenthal food writer of the day. The dish was made from fava/ broad beans. These she had boiled and tried to sieve and ground in the traditional way in the roughly surfaced bottomed ceramic pot (This had been reproduced by a friend). But she resorted to our modern way as so time consuming. To this she added celery, carrot, dried \*ginger root, \*pepper (\*bronze age) garum a fish sauce, honey, wine, vinegar, olive oil and cooked chicken yolks. The vegetables were, introduced by the Romans, although we had duck and pigeon eggs, they introduced chickens as we had introduced them to our ale. Fair exchange! The ingredients were all mixed together with a cow horn spoon. We had a taste of the finished dish which was quite pleasant. Such a lot of other interesting facts, like they enjoyed roast flamingo, stuffed sow uterus, swan, badger and deer. The poor people had no cooking facilities in their homes

so had to go out to the market place to buy cooked food or pay local shops to use their ovens to bake their dishes. There was an early version of pizza but no tomatoes as they came from the Americas. She conveyed to us all these interesting facts which brought Roman history alive. Chris was thanked by Vanessa for her illuminating and fascinating talk. After the delicious refreshments were served by Audrey, Peggy, Rosemary, the new committee of nine and their roles were announced. The President was looking at extra outside social events for members to enjoy. A celebration for the 80<sup>th</sup> D Day on 6 June and maybe a visit to see the Sweet Peas at Easton Gillian read out a moving report written by Rosemarie of the experience some of our members had at the March Spalding Lincolnshire South Federation WI AGM. First with an off the cuff speaker Caroline Bingham, owner of Lincolnshire Life magazine who saved the day, as the expected speaker's car had broken down, and second speaker was the famous and soothing Professor Jonathan Van-Tam who saw us all through the pandemic in 2020 in his role of deputy chief medical officer and the joy of finding a vaccine.

Vanessa pointed out various items on the notice board. The dentist resolution discussion coming up on zoom, elections for WI trustees 2025 – 2027, and Gillian was taking names for 2025 diary orders £7 plus postage. Some bulb catalogues were passed around and were going to be emailed to members by Helen. Closing date is 28<sup>th</sup> May but ideally at our meeting on 21<sup>st</sup>. The yearly Take a Chance for LSFWI funds lottery has come around for those wanting to take part and members were

reminded to bring items for the Bring and Buy to our May 21<sup>st</sup> Resolution meeting.

£130 has been kindly raised for our funds from Maple Leaf Care home where Dot now resides. We hope to put this towards a new Dot Williams competition award/trophy in recognition of all the hard work over the years she dedicated to this WI and to keeping it going when membership was at its lowest.

Winners of the competition an ancient object were 1<sup>st</sup> Lynne and 2<sup>nd</sup> Heather, with a Freedom of the city of London document belonging to her grandfather. Lynne's item was found on an Italian beach in Tarquinia after a severe storm. The pot base and handle turned out to have been made just down the road at Nene Valley and must have been taken or exported there, as identified by Chris. Small world. Flower of the month 1<sup>st</sup> Helen and joint 2<sup>nd</sup> Rosemary and Sandra.

Our next meeting is on Tuesday 21<sup>st</sup> May where we will discuss the WI national resolution "Dental Health Matters". A vote will be taken on supporting this resolution which will go to the National Federation AGM in June. In addition to refreshments there will be a 'Bring and Buy' and a Game of Bingo'. The competition will be something round. Looking ahead our Speaker on June 18<sup>th</sup> is Mrs Dorothy Wood, Bus Pass to Student Card and the competition will be War Time Memories. You will be assured of a warm welcome and a nice cuppa. Another action-packed meeting closed at 4 pm. **Colsterworth Women's Institute Diary Date** Tuesday June 18<sup>th</sup> Women's Institute at The Colsterworth Sports and Social Club – 2 pm.

## The Old Railway Track

A wondrous moment every day  
Something new to see.  
As we walk the railway,  
Or where it used to be.

The Willow Tit, a little bird,  
Comes each year to sing.  
Seldom seen but always heard,  
The joy that it doth bring.

The Hawthorn bush, the Dog Rose briar,  
Entwined as though they're one.  
And on the top, with breast of fire,  
A Robin sings a song.

The Squirrels play among the Beech,  
Those ancient trees of old.  
And build a drey the Fox can't reach,  
That guards against the cold.

Roses growing in many a nook,  
Give pleasure to the eye.  
That giant pathway has a healthy look,  
Since trains stopped going by.

John Hincks

## St. Mary's Church Petition

We urgently need your support to preserve St. Mary's Church in North Witham. The theft of its lead roof in 2019 has left it vulnerable with water seeping in. Progress towards restoration has been sluggish and our heritage is at risk.

We refuse to accept neglect.

Our Church, steeped in centuries of history and culture, cannot crumble while resources are spent on reparations. It's time to say NO to reparations and YES to repair!

St. Mary's Church is not just a building; it's a testament to our shared history. It features graffiti from our famous son, Sir Isaac Newton, and holds a special place in our community's heart. Yet, it currently sits on the Heritage at Risk register, a stark reminder of its perilous state.

Join us in urging the Church of England to take swift action. Sign this petition to Archbishop of Canterbury Justin Welby, demanding funding and resources for the comprehensive repair of St. Mary's Church. Our community stands ready to support, but we need leadership from the Church.

Failure to act dishonours our past. Let's prioritise the restoration of St. Mary's Church without delay. Say NO to reparations and YES to repair!

Sign now at <https://tinyurl.com/restorestmarys> and let your voice be heard!

Councillor Ben Green (Isaac Newton Ward, South Kesteven) and Concerned Community Members

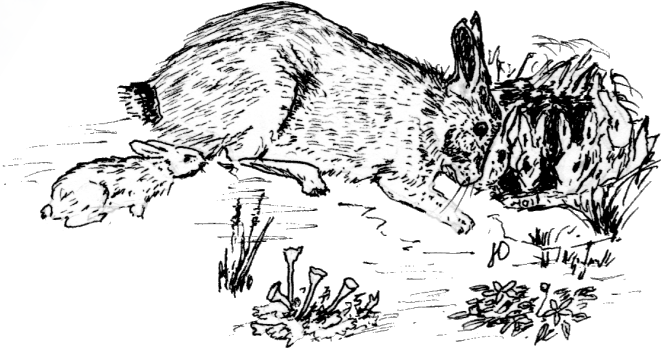
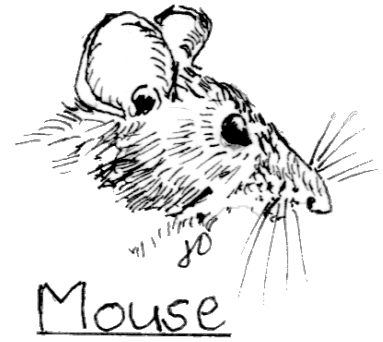
# NATURAL HISTORY BULLETIN

A few kinds of fungi can appear almost any time of the year. One of these is called the Chicken of the Woods. Large and strikingly bright yellow when young it has a texture like suede. It is found on oak or willow and, as in this case, on cherry. The mature tree, found in a Woolsthorpe garden has a water-filled hollow at its base.

Spring is a time to look for woodland plants. Those which are associated with ancient woods need to be searched for in Twyford wood which has in the past been felled to plant conifers and cleared to construct runways in World War II. Wood Anemone, Water Avens and Sweet Woodruff have all been found. Wood anemone had few flowers, and in any case is elusive, the leaves disappearing quickly, peppered with holes of beetles feeding on them. Bluebells, on the other hand, are almost aggressive not only to spread but to dominate other plants. This year they flowered early.

At the start of May warmer days and sunshine between rain meant that there were some butterflies about. The first Speckled Wood had been seen on 13<sup>th</sup> April, but it was May before any more were seen. Numbers of Orange Tips, Small Whites, Holly Blues and Peacock Butterflies were all about by the time of writing this on 9<sup>th</sup> May. Seven Spot Ladybirds still abundant and plenty of Two Spot Ladybirds. The Harlequin Ladybirds have only been seen in ones and twos and no longer seem a threat to our native species. The Tawny Mining Bee regularly recorded in one garden and recognised as a good pollinator of gooseberries was down to a few individuals but the gooseberries are nevertheless producing abundant fruits. The Orange Tailed Mining Bee was later out this year, not appearing until May in a garden where it has been regularly seen earlier in previous years. Carder Bee Workers were fewer and later to appear. Few Honey bees and Hover flies about in wet weather which continued into May. A late frost at end of April also gave concern to gardeners. Returning Warblers reported in mid-April included Chiffchaff, Willow warbler,

Blackcap and Whitethroat. A single Swallow was seen on 23<sup>rd</sup> April and one group of 5 Swallows also seen towards the end of April. On 1<sup>st</sup> May, House Martins arrived overnight at their old nesting sight under the eaves of a house in Colsterworth. Before the end of April fledgling Blackbirds were feeding young on a garden lawn and in the same garden Blue Tits were feeding young in a bird box occupied by Blue Tits last year. The return of Rabbits to old sites has been noted and it is hoped that their close and beneficial grazing at limestone grassland sites like the Roadside Nature Reserve will have an effect.



Hares continue to be seen in daylight hours in the open fields. Lots of records of hedgehogs in gardens confirmed on webcams. Foxes have ventured into gardens on housing estates and both Roe and Muntjack deer are seen in built up areas. Glimpses of our smaller mammals include a weasel crossing the road in Twyford, a pair of Bank voles disturbed in a log pile and a Field Vole photographed on the tiled entrance hall to the field station - waiting to vote?

**To Look for in June.** Grassland flowers like the Bee Orchid. Swifts should be back. Has anyone heard a Cuckoo? Lizards and slow worms basking in sun. I look forward to all your records and observations at **61 Woolsthorpe Road, 01476 860465** e-mail [jnostler@hotmail.co.uk](mailto:jnostler@hotmail.co.uk)



## OptionsAutism

Recruiting now  
Become an Adult Care Worker with Options Autism at Millfield House in Colsterworth, Lincolnshire.  
Salary – Please contact us for latest rates of pay.  
42.5 hours per week over a 2 week rota.  
Phone **01476 860270** for an informal chat or visit our website [www.outcomesfirstgroup.co.uk](http://www.outcomesfirstgroup.co.uk)

We are committed to the safeguarding and promoting the welfare of children, young people and adults. All successful applicants will be subject to fully Enhanced DBS.

## APHRODITE

Professional Hair Stylist

LOUISA SALTER  
Mobile & Salon  
07902615752

Email: [louisa.salter@gmail.com](mailto:louisa.salter@gmail.com)



## Walters

Moves you to Move

Thinking of Selling?

Call us on 01476 856 356  
for a FREE market appraisal



**AN ADVERT  
THIS SIZE  
COSTS ONLY  
£62.50  
FOR  
12 MONTHS**  
[InTouchCopy@gmail.com](mailto:InTouchCopy@gmail.com)

## Meadow Chimney Sweeping Services

Craig Groves  
07803 127 437  
01476 385 285

[meadowchimneysweep@hotmail.co.uk](mailto:meadowchimneysweep@hotmail.co.uk)  
Colsterworth, Lincolnshire

Open Fires, Wood Burners, Gas & Oil Flues swept using latest powered technology & vacuumed



## ROLLING STONES COLSTERWORTH (New Age Kurling)

Welcome to this Spring edition of our Newsletter. As our group has grown and become more involved with day to day running and setting up, and has slowly become one entity with no leaders, just participants, I am leaving it to our members to write their own personal reason why they enjoy Kurling so much.

From Nicky

My husband and I were first introduced to Thursday Kurling group around seven years ago when we first retired and moved to Colsterworth from down South. We didn't know anyone in the village or indeed the area at all as we'd spent our married life in Surrey. One of our neighbours invited us to go for a free trial to see if we would like to join. Well we were both hooked straight away not only with the game of Kurling itself but the lovely people that we were meeting as well. So here we were mixing with lots of new friends and we were not only meeting once a week at the village hall for Kurling but going out socially with some of these people too. It was a lifeline for us until the pandemic hit and then suddenly no Kurling and no meeting up with anyone, but we still were in contact by phone with our new found friends.

Unfortunately before the Kurling started up again my husband passed away suddenly, but once again these lovely friends I had made were there to support me in my hour of need. Three years down the line now and I've continued with the Kurling or should I say The Rolling Stones Curling Group and hope that we get new people to join us and they have a good a time as I have. *Nicky*  
From Keith

Ann and I moved into the village about 20 years ago but we didn't go to Kurling then as the only group was on a Monday and it had a waiting list. I think it was in 2017 that the new Group was set up and our friends invited us to join them at Kurling. We were very warmly welcome, shown how to play the game and settled in very quickly. We soon started making firm new friends and established a very lively social life outside of Kurling. I certainly enjoy the fact that the group is not competitive, until you start playing, then well, its all eyes on the score, with everyone trying for the free admission the following week. My wife Ann doesn't play but she comes along every week for the company, tea, biscuits and of course the latest gossip. We are also able to enjoy social events within the group, lunches, competitions, raffles, BBQ's, etc. We will continue going to Kurling because it is lots of fun, and great company. *Keith*

If you would like to come along and try Kurling and make new friends please don't hesitate to contact me on **07931345932** or just drop by at the Community Centre Woolsthorpe

## ADVANCE NOTICE

St John The Baptist Church Colsterworth

Open Church Event

August Bank Holiday Weekend

More Details In July



## CALLING ALL:

Photographers, Historians, Ornithologists,  
Wildlife Enthusiasts, Designers...

We are seeking funding to install canal information boards between Nottingham and Hickling.

We would like to include:

- Canal details, history, photographs
- Specific local history
- Local bird and wildlife information
- Things to look out for - flora and fauna
- Treasure hunt/ Family Activities
- Any other ideas you may have!



If you are keen to have your work displayed for the next 20 - 30 years, contact Peter: [peter.gs@icloud.com](mailto:peter.gs@icloud.com)



## Colsterworth & District Gardeners & Allotment Holders Association



At the May meeting, Neil Timm from the Fern Nursery near Market Rasen, presented on the "World of Ferns" firstly explaining the development / propagation of ferns and then about all the native United Kingdom varieties and then about some of those available from far afield, for example Japanese ferns.

The monthly competition was a fern or arrangement, with Jo 1<sup>st</sup> & Freda 2<sup>nd</sup>.

We also had 3 visitors this month.

### Future Dates.

10<sup>th</sup> June 2024

Club Outing – TBA – details will be found on Facebook / emails to members.

8<sup>th</sup> July 2024

Hannah Sylvester - The Medicine Chest in Your Back Garden.

Competition: Vase of Herbs (don't have to be home grown)

August

No Monday Evening Meeting in Aug

We always welcome visitors & new members. So please come along to Colsterworth Village Hall at 7.30pm on second Monday in the month. Its £35 to become a member for a full calendar year (pro rata for part year), or £5 for a visitor. This includes entry and a raffle ticket for the raffle, also refreshments of tea/coffee & cake.

More information can also be found on the "Colsterworth and Garden Club Facebook page".

Rod Young

07836719496

# Grow Your Own



## Ever thought of having an allotment?

If you are prepared to commit to some hard work then reap the benefits of fresh home-grown fruit and vegetables, contact the Parish Clerk to add your name to the waiting list.

Tel: **01476 861888**

or email [clerk@colsterworthanddistpc.co.uk](mailto:clerk@colsterworthanddistpc.co.uk)

## STEP BY STEP

### Professional Footcare

Delivered in your own home

### Treatments Include:

- Ingrown toenails & Nail Cutting
- Fungal Infections
- Corn Removal
- Hard Skin Treatments
- General Foot care

### Contact Sabine Today

**07753229992 or 01476 403147**

Fully Qualified S.A.C. Dip. F.H.P  
Fully Insured DBS CHECKED

## COLSTERWORTH

*Festival of Remembrance*

### Military Plaques Required

Have you ever served in the Armed Forces or have a family member that has in the past? If so then we would love your contributions to our military wall within the White Lion.

If you have any Unit, Division, Corps or Single Service plaque then we would love to see them placed on the village military wall.

Any donations to Bob Prentice

This is in support of the Colsterworth Festival of Remembrance (CfOR).

Any questions to David Heath French at

[davidheathfrench@gmail.com](mailto:davidheathfrench@gmail.com)



[www.cfor.org.uk](http://www.cfor.org.uk)

## CJBPLUMBING & HEATING

- Bathroom design and installation
- Gas - Installation, repairs, and servicing
- Underfloor heating
- Unvented cylinders

For all your plumbing and heating needs

Please call: **07957546069**

or Email: [cjbplumbing1@icloud.com](mailto:cjbplumbing1@icloud.com)



## Little Legs Nursery

Colsterworth

Opening hours Monday - Friday  
7am to 6pm

Nursery that offers full and part time care all year round.

For babies from birth to 11 years old.  
Holiday club.

Telephone **01476860053**

Email: [littlelegsteam@hotmail.co.uk](mailto:littlelegsteam@hotmail.co.uk)

Or call in.

2 Graduate Leaders

Quality Care in a Welcoming Environment



## KWR LOGS

Small Net (collection only)

**£8.50**

**£100 PER M<sup>3</sup> Tipped loads**

**WE NO LONGER DO**

**BUILDERS BAGS SORRY**

[kate@kwrplanthire.co.uk](mailto:kate@kwrplanthire.co.uk)

**0775770454**

## Gainsborough Corner Garage

- established 1993 -

will collect and deliver your vehicle from Colsterworth and around.

*Cars & Light Commercial*

*Servicing Repairs*

*MoT testing Recovery*

*AirCon service and repair*

*Troublesome code lights & diagnostics*

Free courtesy vehicle

## GAINSBOROUGH CORNER GARAGE

South Parade Business Park

South Parade

Grantham NG31 6HT

**01476 575577**



## LITES PC



No local call out charges  
24+ Years experience  
Friendly and Efficient  
Competitive pricing

Wireless & Network Setup  
PC Maintenance  
PC Training - ALL levels  
Broadband configuration  
Equipment Sales  
Media conversion  
Data backup solutions

IT Support and Training for Home Computer Users and Small Businesses



**01476 550604 / 07894 659479**  
[www.litespc.co.uk](http://www.litespc.co.uk) [taff@lovesey.net](mailto:taff@lovesey.net)

Quality Web Sites for Small Business and Organisations



Web Site Design  
Web Site Management  
eCommerce Solution  
Online eShops  
Facebook Business Setup  
Search Engine Optimisation  
Web Design Training  
SEO Training

Free web site design consultations for local businesses



NEW WEBSITE

**hp**

Harrison Print

NEW WEBSITE

[www.wgharrisonprint.co.uk](http://www.wgharrisonprint.co.uk)

Unit 11, The Turnpike, Turnpike Close  
Grantham, Lincolnshire, NG31 7DF  
Tel 01476 562700 Fax 01476 562700  
Email [wgharrisonprint@btconnect.com](mailto:wgharrisonprint@btconnect.com)

**FOR ALL YOUR PRINTING REQUIREMENTS**

Michaela Forbes  
Retired Physiotherapist  
Pilates Teacher



Contact details:  
Tel 01778 571264  
Email [mphysio@hotmail.com](mailto:mphysio@hotmail.com)

Buckminster Village Hall  
NG33 5SB

## Pilates classes

Wednesday mornings:

- Improve posture
  - Enhance joint flexibility
  - Strengthen core
  - Manage stress
  - No sweat
- 9.30am Improvers
  - 10.45am Intermediate
  - 12.15 BEGINNERS CLASS: spaces available
  - Maximum of 10 per class so book your place now to avoid disappointment

## GRAPHIC DESIGN

LOGOS | LEAFLETS | POSTERS  
MENUS | BROCHURES | ADVERTS  
INVITES | CAMPAIGNS | PRINT MANAGEMENT

Get in touch and see how we can support you

email: [louise@life-in-pictures.com](mailto:louise@life-in-pictures.com)  
Tel: 01476 861703 [www.life-in-pictures.com](http://www.life-in-pictures.com)

## Decorating Services

Wallpapering  
Painting

Established For Over 20yrs  
City & Guilds trained

**01476 861318**  
**07896 893962**  
[oliverwhittle@hotmail.com](mailto:oliverwhittle@hotmail.com)



## MUMFORD HEATING SERVICES

CALL TODAY ON **07535 977 207**

[WWW.MUMFORDHEATING.CO.UK](http://WWW.MUMFORDHEATING.CO.UK)



- Boiler Breakdowns
- Boiler Servicing & Installation
- Hot Water Cylinders
- Central Heating Upgrades
- Design & Installation
- Free Quotes
- No Call Out Charge



Local & Trusted No Hidden Costs

**CALM VA**  
RESILIENCE VIRTUAL BUSINESS SERVICES

**Calm VA Business Services**

Overwhelmed with tasks and missing family time?

CONTACT US FOR A NO OBLIGATION CHAT

Enhance efficiency with expert remote support. Embrace tranquility, streamline your workload and bring CALM to your chaos.

[Info@calmva.co.uk](mailto:Info@calmva.co.uk)  
[www.calmva.co.uk](http://www.calmva.co.uk)  
07762906786

## D B Ostler Builder

For all aspects of building work, from a new build to just a garden wall, undertaken by a father & son team call

**861190 or 07759 411024**

Have Ostler - your local builder for over 20 years

## P W Plumbing & Heating

Oil Boiler: Servicing & repairs/ installation

Bathroom: design & installation

Oil Tank: Installation & removal of old tank

Full installation of heating systems

**07801 496407**

For all your plumbing needs

**St John the Baptist Church, High Street  
Colsterworth, Grantham NG33 5NF**  
The parish church of Isaac Newton and his family  
Our church has been part of our community for  
more than 1000 years, with a tower added 700 years  
ago. Today it is part of a group of 7 rural parishes  
along the A1 south of Grantham. For enquiries  
please contact the Church Warden or Jo Castro  
Administrator, email: [jo.yonicastro@gmail.com](mailto:jo.yonicastro@gmail.com)



**Contacts:** Rector In Vacancy  
Church Warden Peter Wheatley 07765 126402  
Treasurer Carol Wheatley 07936 437018  
Secretary Peter Baldock 860293  
PCC Member Jan Sweetland 07969 666525  
Hilary Winstanley 861160

Sunday morning services for June at Colsterworth, unless otherwise stated:

2 <sup>nd</sup> June	11am Morning Prayer	Fred Mann ALM
9 <sup>th</sup> June	11am Morning Prayer	Hilary Winstanley ALM
16 <sup>th</sup> June	11am Group Communion At Great Ponton	Revd Jill Potts
23 <sup>rd</sup> June	11am Morning Prayer	Steve Potts Reader
30 <sup>th</sup> June	9:30am Holy Communion shared with Methodists	Revd Dr Anna Sorensen

#### OTHER EVENTS

**CHURCH CLEANING: TUE 11<sup>th</sup> JUNE 9:30AM, COFFEE & CHAT AFTER.  
COFFEE MORNINGS 10:00-12:00: TUE 4<sup>th</sup> JUNE – HOSTS: CHRISTINE &  
PETER BALDOCK 41 COLSTER WAY, COLSTERWORTH.  
TUE 2<sup>nd</sup> JULY – HOST: SIMON JOWITT 16 INGLE COURT  
WOOLSTHORPE BY COLSTERWORTH**

OPEN DAILY 10:00am – 4:00pm for visitors and contemplation. Foodbank  
donations may be left in the box in the porch, please support if you can, thank you.

*As we are without a resident vicar our services are led by visiting clergy or lay  
volunteers, with tea, coffee and biscuits after each service. Baptism, Wedding or  
Funeral Services can be arranged, please contact Peter, Churchwarden.*

For more information on services, or the church,  
please see social media, our website,  
[www.achurchnearyou.com/St-John-the-Baptist-Colsterworth](http://www.achurchnearyou.com/St-John-the-Baptist-Colsterworth),  
or contact the Peter, Church Warden.

**Minister:** Rev'd Neil Maynard,  
142 Princess Drive,  
Grantham, NG31 9PY  
Tel: 01476 564191  
Email: [neil.maynard@methodist.org.uk](mailto:neil.maynard@methodist.org.uk)  
Village Contact:  
Pamela Harrison – 01476 861864



## COLSTERWORTH METHODIST CHURCH June 2024

Our services will be in the church, however we will also be zooming at least 2 services a  
month from the building, internet permitting. If you are interested in joining our services by  
zoom, please email [helenscorror@outlook.com](mailto:helenscorror@outlook.com) or phone **01476 860126** for more  
details.

Date	Time	Service	Preacher	Flowers
2 <sup>nd</sup>	10:30am	Morning Worship	Rowena Ward-Barrow	Gill Dexter
9 <sup>th</sup>	10:30am	Morning Worship	Tony Charles	Gill Senescall
16 <sup>th</sup>	10:30am	Morning Worship	Jennie Fytche	Lynn Lewis
23 <sup>rd</sup>	10:30am	Holy Communion	Rev'd Neil Maynard	Cheryl Sutcliffe
30 <sup>th</sup>	11:00am	United Service at Parish Church		

#### Chapel Anniversary & Supper – Wednesday 12<sup>th</sup> June at 7pm.

Join us as we celebrate the continued life of our church in Colsterworth. Our preacher will  
be David Taylor and supper will follow the service in the hall.

#### Mini Fete – Saturday 29<sup>th</sup> June 2:00 – 3:00pm.

Homemade cakes, refreshments, games, plants, bric a brac

#### Open Door Lunch – Wednesday 12<sup>th</sup> & 26<sup>th</sup> June 11:45am – 1:30pm.

We will be serving filled rolls with either a hot pudding or cake plus of course offering lots  
of chat. We welcome people of all and no faith to join us and of all ages. Our book and  
jigsaw library will be available for you to browse and borrow from.

#### Games/Craft & Chat Group – Wednesday 5<sup>th</sup> & 19<sup>th</sup> June – 2:00-3:30pm.

Bring your own craft along and join our group for a cuppa, a chat and maybe an  
opportunity to learn new skills. Or alternatively come and have a chat over a game of  
dominoes. Everyone welcome.

**Hall Hire** – Our Church Hall is available to hire for meetings, children's parties, fitness  
classes, etc. Please contact Helen Scrorr on **01476 860126** for more details.

## Villages Diary June 2024

Tue 4 <sup>th</sup>	10am - 12pm	Coffee Morning	41 Colster Way, Cols.
	7:30pm	Parish Council	Methodist Church Hall
Wed 5 <sup>th</sup>	2-3:30pm	Games/Craft & Chat	Methodist Church Hall
Mon 10 <sup>th</sup>	7:30pm	Garden Club	Colsterworth Village Hall
Wed 12 <sup>th</sup>	11:45-1:30pm	Open Door Lunch	Methodist Church Hall
	7pm	Chapel Anniversary & Supper	Methodist Church Hall
Tue 18 <sup>th</sup>	2pm	Women's Institute	Sports & Social Club
Wed 19 <sup>th</sup>	2-3:30pm	Games/Craft & Chat	Methodist Church Hall
Thu 20 <sup>th</sup>	12-12:30pm	Mobile Library	Colster Way
Wed 26 <sup>th</sup>	11:45-1:30pm	Open Door Lunch	Methodist Church Hall
Sat 29 <sup>th</sup>	2pm-4pm	Mini Fete	Methodist Church Hall

### Weekly

<b>Mondays</b>	10am-noon	<b>FOCUS Kurling</b>	Village Hall
	7:15pm	<b>Bell Ringers</b>	Church
<b>Tuesdays</b>	6pm-7pm	<b>Yoga</b>	Methodist Church
	6pm-7:30pm	<b>Cubs</b> (Term time)	Village Hall
<b>Wednesdays</b>	11:45am -1:30pm	<b>Open Door</b> (2 <sup>nd</sup> & 4 <sup>th</sup> Weeks)	Methodist Church
	2pm-3:30pm	<b>Craft &amp; Chat</b> (1 <sup>st</sup> & 3 <sup>rd</sup> Weeks)	Methodist Church
<b>Thursdays</b>	10am-noon	<b>Rolling Stones Kurling</b>	Village Hall
	7pm-8:30pm	<b>Scouts</b> (Term time)	Village Hall
	5:45pm-6:45pm	<b>Beavers</b> (Term time)	Village Hall
<b>Fridays</b>	7:30pm-9:30pm	<b>Weekly Bingo</b>	Sports & Social Club
<b>Saturdays</b>	10am-12noon	<b>Football Coaching</b>	Sports Field

### Copy for next month's issue of In Touch must arrive by noon on Thursday 13<sup>th</sup> June 2024

Email contributions to [InTouchCopy@gmail.com](mailto:InTouchCopy@gmail.com)

The deadline date is final and copy may not be included if there is a shortage of space.  
Please submit your copy as early as possible.

Images and/or artwork submitted in digital formats **MUST** be at a resolution of 300dpi.

Ensure that you put your contact details on any submission.

Send or deliver hard copy to **5 Stephenson Close, Colsterworth NG33 5GP (Tel:07773 230815).**

Remember to give dates of future meetings if you want them to appear in the Villages' Diary.  
The Publishers accept no responsibility for goods or services advertised for sale in this magazine. The  
acceptance of advertising does not in any way imply that the advertiser is endorsed by the Publishers.  
Published by Colsterworth and District Parish Council @2023

## Mobile Post Office

Stopping by Colsterworth Bowls Club

Mon 0900 – 1100  
Tue 0900 – 1000  
Wed 1345 – 1545  
Thu 0900 – 1100  
Fri 0900 – 1030

Contact Andy on  
01778 570221



## NORTH WITHAM VILLAGE HALL

Contact Jane Clark on 07778 393872, [north.witham@gmail.com](mailto:north.witham@gmail.com)  
for Village Hall matters and bookings

## Call Connect

Lincolnshire's on demand bus service

find more information at: <https://lincsbus.info/callconnect/>

#### FOR HIRE

#### COLSTERWORTH VILLAGE HALL

For your Party, Meeting, Conference,  
Wedding Reception.

We offer Large Hall, Good Parking,  
Kitchen, Performance Stage.

With Newly installed-Mood Lighting,  
Free Wi-Fi.

Call 07748 090655



**Colsterworth**

#### Sports & Social Club

Now Showing Sky & BT Sports

#### Function Room Available

for Parties, Meetings, Receptions  
Call Debbie on 07746 067066

for details, bookings