

# In Touch

<https://colsterworth.parish.lincolnshire.gov.uk/>

News for the villages of Colsterworth, Woolsthorpe, Stainby, Gunby, North Witham and Lobthorpe

Edited by Stuart Whitcombe 5 Stephenson Close, NG33 5GP 0777 323 0815 InTouchCopy@gmail.com



## DEREK COX

On 11<sup>th</sup> September 2023 at St John the Baptist Church, Colsterworth, we said goodbye to Derek Cox who, after a short illness, passed away peacefully in his sleep on 15<sup>th</sup> August 2023. Derek was a well-known figure having been a Parish Councillor for over 20 years. As well as being a Church Warden, he was always willing to help and get involved in the community. Sandra would like to thank everyone who gave their kind thoughts and all those who attended the funeral and made generous donations to the Air Ambulance Service in his memory.

## White Lion

High Street, Colsterworth

01476 861466

[www.whitelioncolsterworth.co.uk/](http://www.whitelioncolsterworth.co.uk/)

	Open	Food
Mon	12-9pm	12-8pm
Tue	6-11pm	No food
Wed	12-9pm	12-8pm
Thu	12-11pm	12-9pm
Fri	12-11pm	12-9pm
Sat	12-11pm	12-9pm
Sun	12-8pm	12-6pm



**Walters**  
Moves you to Move

**Thinking of Selling?**  
Call us on 01476 856 356 for a FREE market appraisal

## APHRODITE

Professional Hair Stylist

LOUISA SALTER  
Mobile & Salon

07902615752

Email: [louisa.salter@gmail.com](mailto:louisa.salter@gmail.com)



- Landscaping
- Groundwork
- Concreting
- Fencing
- Garden/Retaining Walls
- Tractor Mounted Hedge Cutting
- Heritage/conventional Stone work Brick work Lime pointing

**Robert Duffin**  
HEDGE LAYING FENCING & GROUNDWORK

T: 01572 787 632 M: 07834 243 966  
Email: [rob\\_duffin@hotmail.com](mailto:rob_duffin@hotmail.com)  
[www.robduffin.com](http://www.robduffin.com)

**theWI** INSPIRING WOMEN

## Coffee Morning Fundraiser

Thursday 19<sup>th</sup> October  
10am - 12 noon

at  
**The White Lion, Colsterworth**  
By kind permission of Bob & Phil

## Cakes & Raffle

In aid of Colsterworth WI & SOLDAS  
(South Lincolnshire Domestic Abuse Services)

Originally Boston Women's Aid, this charity now supports victims of domestic abuse throughout Lincolnshire

Join us for a cuppa and cake

Katy Howitt Jo Taylor

We are the Community Connectors for the Grantham area and we can't wait to meet you all. Why not come and join us for our Peer support catch up where you can meet new people and find out what local support is available for good mental health and wellbeing. There's also tea, coffee and refreshments - what's not to love

Colsterworth Methodist Church Hall  
Back Lane  
Colsterworth  
Grantham  
Lincolnshire  
NG33 5NJ

Starting 19<sup>th</sup> September  
3<sup>rd</sup> Tuesday of every month  
10am -12pm

Contact [program@granthamwomensaid.org.uk](mailto:program@granthamwomensaid.org.uk) for more information

**CalM** CALM VA ADMINISTRATIVE SERVICES

Remote support - helping Directors, Coaches and Businesses focus on growing

We can HELP you.....

- Save Valuable Time
- Stay Organised

Taking the stress away

- General Administration
- Project Management
- Expenses
- Emails
- Diary Management
- Appointment booking
- Personal Life
- Client Communication
- Event Management
- Onboarding of staff

Advantages to you, NO need to pay any

**CONTACT US**  
07762906786  
[info@calmva.co.uk](mailto:info@calmva.co.uk)  
[www.calmva.co.uk](http://www.calmva.co.uk)

## Your headlines from the Parish Council (PC) Meeting 5<sup>th</sup> September 2023

Full minutes and reports are available on the Colsterworth and District Website

Search "Colsterworth and District Parish Council" and find the agendas and minutes under "Council Business"

### Council business – Colsterworth and District Parish Council ([lincolnshire.gov.uk](http://lincolnshire.gov.uk))

#### PUBLIC FORUM:

Chairperson Cllr C Hainsworth welcomed the 12 members of the public present.

- The first member of the public spoke in support of their application to be Co-opted as a Parish Councillor for Colsterworth who was invited to remain until agenda item 2023.66.

- The second member of the public spoke in relation to the allotments and thanked the Cllrs for the opportunity to have dogs on site. They also commented that several plots look neglected which is not fair on tenants who keep on top of their plots. Seeds are seeding onto other plots. They said they would not object to an increase in the allotment rent so that neglected/vacant plots can be regularly strimmed. They suggested that the Parish Council are stricter with those tenants who are not looking after their plots. The Chair Cllr C Hainsworth thanked the member of the public for raising the issue and that this would be discussed later in the meeting at agenda item 2023.67.

- The third member of the public to speak was a representative of Hereward Homes Ltd who had recently completed the development on The Woodyard off Stamford Road. They stated that they had been approached by the owners of a parcel of land at the rear of 18-24 Bourne Road to develop that land for housing. They stated it was early days, having only just had a survey completed with no real plans but they would like to have a dialogue with the Parish Council. Chair to the Parish Council Cllr C Hainsworth spoke advising the representative from Hereward Homes Ltd that there were several local residents at the meeting regarding this potential development. They advised that the Parish Council is not a planning authority.

A short discussion then took place between the residents and the representative from Hereward Homes.

- At 7.45pm another member of the public joined the public forum and left soon afterwards without making clear their reason for joining the meeting.

The public forum was extended to 7.55pm to allow all those present to speak.

Full details of the public forum can be found on the website above.

#### CHAIR'S REMARKS:

Chairperson Cllr C Hainsworth welcomed everyone back after the summer break, making a special mention to the sad loss of Derek Cox who was a long serving member of the Parish Council and Chairperson for many years. Derek was a prominent figure in the Parish Council and the community. The Parish Councils thoughts go to the family.

### Lincolnshire County Council and South Kesteven District Councillors Report.

#### SKDC Cllrs B Green report: -

- Welcome to the new Cllrs.
- The SKDC Council Tax Support Scheme Survey is open from 1st September to 13th October. More information can be found on the following link <http://www.southkesteven.gov.uk/index.aspx?articleid=8129>
- A motion was tabled at the July SKDC meeting to enable refuse vehicles to collect used batteries via a bag. This is with the Environment Committee for further discussion.

- A1 Litter Issues – A report is being explored how SKDC can learn how to move forward with the A1 litter issue.

- A reminder of the Litter Abatement Order that the Parish Council can serve on SKDC.

- Free tree packs available from 4th September from the Woodland Trust.

#### SKDC D Bellamy report: -

- Cllr D Bellamy had previously covered planning issues in the public forum.
- A reminder that there were still funds available in the UK Shared Prosperity Fund.

LCC Cllr C Vernon sent their apologies.

#### Co-Option for Cllr for Colsterworth

Mr Chris Rowland was unanimously approved as Cllr for Colsterworth.

#### Colster Way Playing Field Goal Area

It was resolved to agree to go ahead with the quotation to repair the ground at the goal area on Colster Way Green at a cost of £150.00.

#### Allotments

Unanimously agreed to forward agenda to the next meeting following the allotment inspections due in September.

#### Updates for Council administration

- Resolved to accept the PKF Littlejohn LLP Accountants Annual Governance & Accountability Return (A.G.A.R.) Conclusion for year ended 31st March 2023. AGAR Sections 1, 2 & 3.

Planning Working Group Report from meeting 22/08/2023

Unanimously approved to accept the recommendations in the report.

#### Finance

Accounts for payment were approved by Council.

#### Highways & Footpaths Working Group Report (Cllr C Hainsworth) Ad-hoc report.

The Clerk arranged a Community Speed Watch (CSW) Volunteer training event with the Lincolnshire Road Safety Partnership (LRSP) representative on 21/08/2023 for new volunteers and refresher training for existing volunteers. LRSP have confirmed all volunteers are covered by their indemnity insurance and CSW sessions are in the process of being planned.

#### Environment & Amenities Working Group Report.

War Memorial Project update (Cllr T Neale) (S Grant – Clerk)

War Memorial Tenders

FCC Grant Application: -

It was unanimously resolved to select Tender Company 2 of

£33,380.45 excl vat.

FCC Environment Grant Application (Clerk S Grant) Closing date 06/09/2023

FCC Grant application submitted by the Clerk 06/09/2023 (Post meeting note)

#### Nature Trail

The Volunteers enjoyed the annual Summer BBQ gathering on Sunday 20<sup>th</sup> August kindly hosted by volunteers in their garden.

## Clerks Report & day to day business.

- 1 South Kesteven Climate Change Strategy consultation can be commented on the following link. [www.southkesteven.gov.uk/index.aspx?articleid=16188](http://www.southkesteven.gov.uk/index.aspx?articleid=16188)
- 2 Hole on the verge Back Lane junction Woodlands Drive reported FMS, work completed 18/07/2023.
- 3 Overgrown Footpath 21 cut back by LCCROW and a community spirited resident. Thank you.
- 4 The eco-tumble play area surface at North Witham has been repaired but an area at the end of the slide still needs attention. The contractors have returned and completed the job satisfactorily.
- 5 The Clerk has arranged with LCC Community Speed Watch (CSW) training session 6 pm on Monday 21st August at the Methodist Church Hall for new volunteers and refresher training for the existing volunteers.
- 6 The Parish Council External Audit Report from PKF Littlejohn LLP auditors has been received with no findings.
- 7 On 1st September, the Parish Council insurers will retire the BHIB Councils Insurance name, brand and website and start trading as Clear Councils.
- 8 Update from LCC ROW on Footpath 5 - both stiles in the first field alongside the Coop will be replaced with kissing gates. No timescale given.
- 9 Community Speed Watch equipment loaned to Corby Glen Parish Council returned 19/08/2023 with thanks from Corby Glen PC.
- 10 Cllrs have been invited to complete a survey by LCC about the Lincolnshire Road Network.
- 11 Community Speed Watch (CSW) training held on Monday evening 21st August for 5 new CSW volunteers and refresher training for 3 existing volunteers.
- 12 Old Post Lane Play area check identified 2 x wood screws had detached from one of the fixings holding the climbing rope. Hazzard tape attached to the climbing rope and 2 x screws ordered.

## Correspondence received

Council received details of correspondence received relating to speeding vehicles, lack of police presence, fly tipping and potholes.

## SKDC Planning Applications

- S23/1308 - Erection of single storey rear extension. Longlands House, 45 Woolsthorpe Road, Woolsthorpe By Colsterworth, Lincolnshire, NG33 5NU
- S23/1366 - Single storey side extension. 4 Newton Way, Woolsthorpe By Colsterworth, Lincolnshire, NG33 5NR, None
- S23/1443 - Fell T1 Common Ash Fraxinus. 55 High Street, Colsterworth, Lincolnshire, NG33 5HZ,
- S23/1420 - Engineering works to import top soil, terrace and landscape part of rear garden of property. Cedar House,

Woolsthorpe Road, Woolsthorpe By Colsterworth, Lincolnshire, NG33 5N

## SKDC Planning Permission

S23/0679 - Proposed dormer to existing loft, alterations to existing single storey extension including fenestration and cladding, 52 High Street Colsterworth, Lincolnshire NG33 5NF

S23/0787 - Submission of details in relation to conditions 3 and 4 (Archaeology) of S22/2477 (New menage for private use).

Location: Tower Hill

S23/1185 - Withdrawal of Works to Tree - SKDC Works to T1 Taxus bacata, reduce canopy by up to 1.5 meters / 25 %.

Location: 43 High Street Colsterworth

S23/1443 - Fell T1 common ash Fraxinus. 55 High Street Colsterworth, Lincolnshire NG33 5H

## SKDC Planning withdrawal

S22/1919 - Outline planning application for change of use and associated alteration of storage container to live work unit, and stationing of two additional containers for use as part of the proposed mixed use unit (Appearance and Layout for determination all other matters reserved). Oak House Morkery Lane, Castle Bytham Lincolnshire NG33 4SR

## LCC Planning Application

CATEGORY A - LCC REFERENCE: PL/0063/23

DEVELOPMENT: TO VARY CONDITION 6 AND REMOVE CONDITION 20 OF PLANNING PERMISSION S15/3028 TO REMOVE STONE UNDER AREA OCCUPIED BY WEIGHBRIDGE AND WHEELWASH

LOCATION: COLSTERWORTH TRIANGLE, CRABTREE ROAD, COLSTERWORTH

GRID REFERENCE: 489816 324337

## Matters Requiring attention

None raised.

**The next Parish Council meeting is Tuesday 3<sup>rd</sup> October 2023. Methodist Church Hall, Back Lane, Colsterworth.**

## Proposed Council Tax Support Scheme 2024/25

South Kesteven District Council is currently considering how it can fund the Council Tax Support (CTS) scheme from April 2024 and has put forward a number of changes for public consultation. Before approving a final scheme, South Kesteven District Council is required to consult with any person they consider is likely to have an interest in the operation of the scheme.

A consultation has been published on their website, which can be viewed at [www.southkesteven.gov.uk/CouncilTaxSupportSchemeSurvey](http://www.southkesteven.gov.uk/CouncilTaxSupportSchemeSurvey)

They will be issuing a press release with details, inviting completion of an online consultation. We have also written to all those in receipt of Council Tax Support.

The consultation period starts on Friday 1st September and ends at 5pm on Friday 13th October.

The final Council Tax Support scheme for 2024/25 will be approved at the SKDC Council meeting January 2024.

## EweMove Sleaford & Grantham South Rated 5 Star By Local Sellers & Landlords



*"Hi I'm Rachel, I'm here to help with your property needs."*



To Get Your **FREE** Online Valuation Report  
Visit: [www.EweMove.com/GranthamSouth](http://www.EweMove.com/GranthamSouth)  
Or Call 24/7: **01476 858 570**

## OptionsAutism

Recruiting now

Become an Adult Care Worker with Options Autism at Millfield House in Colsterworth, Lincolnshire.

Salary – Please contact us for latest rates of pay. 42.5 hours per week over a 2 week rota.

Phone **01476 860270** for an informal chat or visit our website [www.outcomesfirstgroup.co.uk](http://www.outcomesfirstgroup.co.uk)

We are committed to the safeguarding and promoting the welfare of children, young people and adults. All successful applicants will be subject to fully Enhanced DBS.

# theWMI

## INSPIRING WOMEN

It was very nearly a full house when our members and visitors were eager to see if they were up to the regulations to enable them to take, or have to retake their driving test. Our guest speaker Stephen Brown, formerly a Driving Inspector, but now retired. He demonstrated, courtesy of our President, Vanessa (taking part as a learner driver) some of the conversations he had with learner drivers, some hair raising. They were very amusing and reminded us of the record of the same subject we listened to on the radio. He told us that there were scammers offering cheaper prices for lessons in Kings Lynn and warned learners to check if they were registered as some learners having paid for a block of lessons, had one lesson and never saw the instructor again, having lost all their money. He spoke of the new points now required such as how to use a sat-nav, and even how to charge a battery for an electric model. He was thanked for an instructive and (also amusing) talk by Jill Watson who said how the tests have altered since taking hers and said that she wasn't sure that she might struggle with all the new requirements needed.

Business included calls for entrants for the county federation quiz at Screddington, a Lincolnshire Day celebration at Leasingham, this included a talk by historian Judi Jones, entertainment (musical, songs of contemporary folk) and (more songs). As we go to print there has only been one taker.

There's more interest in the M & S archive in Leeds. We are all set for our trip to Spalding. Thanks to Rachel and the volunteer drivers. An upholstery workshop, sounded interesting but a bit pricey, and did include taking home what you had covered.

We are to hold a coffee morning at the White Lion on Thursday 19<sup>th</sup> October, 10 til 12 noon, and our anniversary lunch will also be held there on 23<sup>rd</sup> November.

The result of the stall on Gala Day, coins in a jar. There was £12.58. The adult winner was Kathleen and the children's winner was Sam's daughter.

Our monthly competition winner, with an item initial C was Dot with a coffee 'cum' clock, runner up was Rosemarie with a comic. Flower of the month winners were Shirley and Rosemarie in second place. Our future meeting on the 17<sup>th</sup> October at the usual place, Sports and Social Club at 2 pm will see us with our Sandra, demonstrating and talking about all things handicraft. The competition is an item initial "D" and I'll tell you all about Cross Key Clog in the next In Touch, as we meet later than the deadline.

So if you would like to join us in the Social and Sports Club (oops) at 2.00 pm there will be a warm welcome and the refreshing cup of whatever you like to drink and the renowned slice (or two) of cake or whatever you see on the buffet table.

*Dot Williams*

### Diary Date

October 17<sup>th</sup> Women's Institute in the Sports and Social Club at 2:00 pm.

## COLSTERWORTH

*Festival of Remembrance*

It is that time of year when planning for the Remembrance Day Service on 12th November 2023 is being organised. The service this year following the wreath laying ceremony at the Memorial will be at the Methodist Church, Back Lane, Colsterworth. Details of the Event can be found on the CFoR website.

Pam Harrison from the Methodist Church is co-ordinating the display at the Methodist Church including the poppy wall tribute made by Steve and Sally Osborne and their volunteers.

Jackie Taylor of Colster Way is also co-ordinating a group of volunteers to help with decorating St John the Baptist Church who are custodians of the World Wars Roll of Honour and RBL Standard to mark this important event. The Church display is planned to be installed by Saturday 14th October 2023. The Church will be open from 14th October 2023 for everyone to attend the display and make voluntary donations. Proceeds from donations have been nominated in 2023 for the War Memorial Restoration Fund with a contribution to the CFoR general fund and Royal British Legion.

The volunteers will also have made various items for sale to acknowledge the symbol of the Poppy in Remembrance and there will be a Coffee and Cake morning to raise funds on Saturday 28th October 2023 in St John the Baptist Church from 11.00 a.m.

There are many more groups and individuals contributing to the event and there will be an opportunity to support the Festival of Remembrance at The White Lion Public House during October and November 2023. There will be additional displays around the village to watch out for in addition to the Service itself.

The Parish Council has again donated Lamppost Poppies and anyone wishing to sponsor a lamppost can do so through Jackie Taylor. You can also purchase your own lamppost poppies through the RBL website. More volunteers are required to help set up and act as Marshalls for the road closure required for the service at the War Memorial and parade to the Methodist Church so please contact us via the website to offer your support.

**Colsterworth Festival of Remembrance | Colsterworth & Surrounding Villages (cfor.org.uk)**

### SPOTLIGHT ON ..... COMMUNITY SPEED WATCH (CSW)



Road safety is important to everyone and we are fortunate to have a group of volunteers who are willing to give their time to the CSW scheme with a new Co-ordinator in place. Their purpose is to make the roads in the villages safer for children, walkers, cyclists and drivers.

This is supported by the Lincolnshire Road Safety Partnership who is made up of Lincolnshire County Council, Lincolnshire Police, Highways England, Lincolnshire Fire and Rescue and East Midlands Ambulance Service.

There are currently passive speed limit reminder notices and speed indication devices installed in the Parish and now volunteers have signed up to reinstate the roadside speed checks which have not taken place since COVID lockdown. The volunteers have all been trained and the police will send letters of advice to registered keepers of any vehicle exceeding the speed limit. Speed enforcement remains the responsibility of Lincolnshire Police.

CSW is a proactive solution to improve the safety and quality of life for everyone in the community. PLEASE BE RESPECTFUL TO VOLUNTEERS AND SUPPORT THIS CAMPAIGN

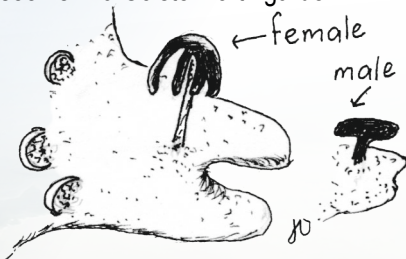
More volunteers are needed so please contact the Parish Clerk to get more information and register your interest [clerk@colsterworthanddistpc.co.uk](mailto:clerk@colsterworthanddistpc.co.uk)



## Lincolnshire Road Safety Partnership

# NATURAL HISTORY BULLETIN

The humid atmosphere towards the end of August produced a surprise. Under the shade of a mature tree, growing in a well worn gravel path was a wide spread of the liverwort *Marchantia polymorpha*. Belonging to a group of plants, even less known than its close relative, the mosses, liverworts are basically a flat spread of green which grows in two-lobed fashion. *Marchantia polymorpha* (no common name), is however distinctive. It has a belt, braces and buttoned-up approach to reproduction. At its simplest a broken off piece given the right conditions, develops into a new plant. A second option (the braces) are raised crescent shaped cups containing green discs. If splashed with rainwater they will develop into new plants. The 'buttoned up' addition is sexual reproduction. The female cells are found under eight-rayed umbrella shapes carried above the plant. The male cells, on separate plants are under mushroom shaped structures on short stalks. Fertilisation depends on water to carry them to the female structures. This liverwort can be found at lock gates and in green houses regularly misted. Now it seems in a Colsterworth garden.

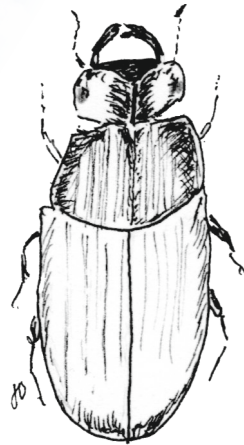


*Marchantia polymorpha*

As we moved into the September late heatwave Red Admirals were feeding on fallen apples. A new brood of Speckled Woods were frequent seeking shade except when dancing in mating flight.

Large and Small Whites were everywhere with the occasional Brimstone. Fully grown caterpillars of the Privet Hawk Moth and the Elephant Hawk Moth were ready to go into hibernation. The Humming Bird Hawk Moth was still about until the time of writing.

A rotting log was found to have the larvae of the Lesser Stag Beetle. The adults were hidden in the same logs. They haven't the 'antlers of the larger Stag Beetle which is not found locally.



Lesser Stag Beetle

Our summer migrants will soon all be gone. The drop in their numbers continues. This year it is the swallows which have returned in lesser numbers and first nesting abandoned. It is over a decade since the last turtle dove was heard in Colsterworth. Only one report of Cuckoo this year. Spotted Flycatcher has not returned to nest in a garden as in previous years. Some Chiffchaff and Blackcaps have overwintered with us but other warblers are declining. It is not that the habitats for these birds has disappeared but that the hazards of their journeys, some to sub Saharan Africa, and that climate changes have meant that the peak of insect emergence does not synchronise with the times to feed the young.

Garden records continue to be important and show that where some colonies of House sparrows have gone their is a resurgence of Goldfinches and Green finch. Greater spotted woodpeckers reported in more gardens and Blackbirds have done well.

Gardens are important for small mammals too. A Bank Vole turned up in one. Hedgehogs are dependant on the care given to them and have bred and reared families. Bats hunting at night over lawns.



### To Look For in October:

I look forward to hearing from any of you with an interest over the wide range of records and observations which have been coming in. The Bulletin started Seventeen years ago. More on this in November edition. I look forward to hearing from you at **61 Woolsthorpe Road, 01476860465** e-mail [jnostler@hotmail.co.uk](mailto:jnostler@hotmail.co.uk)  
*Jane Ostler*

## Dog waste bins provided by the Parish Council which are situated in the following locations.

- Old Post Lane junction Water Lane
- West End of the Nature Trail
- The Nature Trail behind Woolsthorpe Play Area
- Footpath 18 near river
- Stamford Road near allotment
- School Lane where it meets footpath 20



If the Parish Council Dog waste bins are full you can use an SKDC litter bin with the dog waste accepted logo.

## COLSTERWORTH Festival of Remembrance

### Military Plaques Required

Have you ever served in the Armed Forces or have a family member that has in the past? If so then we would love your contributions to our military wall within the White Lion. If you have any Unit, Division, Corps or Single Service plaque then we would love to see them placed on the village military wall.

Any donations to Bob Prentice This is in support of the Colsterworth Festival of Remembrance (CFoR).

Any questions to David Heath French at [davidheathfrench@gmail.com](mailto:davidheathfrench@gmail.com)



[www.cfor.org.uk](http://www.cfor.org.uk)

### Temporary restriction: Colsterworth traffic

Reference: TTRO/TTR004766

Please note it will be necessary to impose a temporary restriction as detailed below.

Organisation responsible for restriction: Anglian Water  
Reason for restriction: Meter maintenance  
Nature and location of restriction:

**Road closure Order - Honey Pot Lane (Between 750m & 950m East of A1)**

#### Period of restriction:

03/10/2023 - 05/10/2023

(Restrictions to be implemented for 3 days as and when required during this period, signage detailing accurate dates and times will be displayed on site in advance)

#### Alternative route or access arrangements:

Diversion routes and vehicular or pedestrian access arrangements will be signposted.

This information is also available in map form at <https://one.network/>

### Temporary traffic restriction: Colsterworth

Reference: TTRO/TTR004900

Please note it will be necessary to impose a temporary restriction as detailed below.

Organisation responsible for restriction: Lincolnshire County Council

Reason for restriction: Carriageway maintenance

Nature and location of restriction:

#### Road closure Order -

A151 Bourne Road (Between A1 Services Entrance & a point 150m East)

A151 Bourne Road (Between Services Roundabout & a point 100m South)

### Period of restriction:

03/10/2023 - 04/10/2023

20:00 - 06:00

(Restrictions to be implemented for 2 days as and when required during this period, signage detailing accurate dates and times will be displayed on site in advance)

#### Alternative route or access arrangements:

Diversion routes and vehicular or pedestrian access arrangements will be signposted.

This information is also available in map form at <https://one.network/>

### Temporary traffic restriction: Colsterworth/Lobthorpe

Reference: TTRO/TTR004912

Please note it will be necessary to impose a temporary restriction as detailed below.

Organisation responsible for restriction: Lincolnshire County Council

Reason for restriction: Essential Carriageway Repairs

Nature and location of restriction:

#### Road closure Order -

Honey Pot Lane (Between A1 & a point 200m East)

Wooleys Lane (Between A1 & a point 1100m East)

#### Period of restriction:

04/10/2023 - 05/10/2023

20:00 - 06:00

(Restrictions to be implemented for 2 days as and when required during this period, signage detailing accurate dates and times will be displayed on site in advance)

#### Alternative route or access arrangements:

Diversion routes and vehicular or pedestrian access arrangements will be signposted.




This information is also available in map form at <https://one.network/>

 **JK Prestige Cleaning**  
Fully insured & DBS checked  
Spaces available for weekly, monthly & fortnightly cleans £15 per hour, we cover Grantham and surrounding areas  
Own products & equipment supplied  
Please call/text 07460 010659 or email [jkprestige@outlook.com](mailto:jkprestige@outlook.com) for further details

 **Meadow Chimney Sweeping Services**  
Craig Groves  
07803 127 437  
01476 385 285  
[meadowchimneysweep@hotmail.co.uk](mailto:meadowchimneysweep@hotmail.co.uk)  
Colsterworth, Lincolnshire  
Open Fires, Wood Burners, Gas & Oil Flues swept using latest powered technology & vacuumed

**PIANO, KEYBOARD, FLUTE AND MUSIC THEORY LESSONS**  
VANESSA JACKSON  
BA HONS/PGCE  
EXPERIENCED TEACHER  
DBS CHECKED  
**MOBILE 07857 810518**  
[email vanessajackson@outlook.com](mailto:vanessajackson@outlook.com)  
Face-to-face & Online lessons available

**AN ADVERT THIS SIZE COSTS ONLY £59.50 FOR 12 MONTHS**  
[InTouchCopy@gmail.com](mailto:InTouchCopy@gmail.com)

 **COLSTERWORTH & DISTRICT GARDENERS & ALLOTMENT HOLDERS ASSOCIATION**  

The annual show was well attended on Saturday 9th September, with 124 entries received over 39 Specified categories, with the youngest winning entrant being only almost 2 years old with a lovely picture made of leaves and herbs. The club would like to thank the Methodist Church for allowing the hire of the hall.

Monday's evening meeting was a talk by Camilla Anderson. On "Stately Gardens of England", her presentation covered Gardens of Stately homes including Alnwick, Chatsworth and others. Alongside pictures of the gardens and their development we learned a great deal of the history of the families that owned the magnificent houses. We had several entries of Garden Photos for our club members competition. We also welcomed 2 new members at this meeting.

Then our next meeting will be the 9<sup>th</sup> Oct at Colsterworth Village Hall.

Future Dates.


9<sup>th</sup> Oct – Russell Attwood - A Passion for Pumpkin  
Members Competition: Carved Pumpkin

13<sup>th</sup> Nov – Karen Gibson – 365 Days of Colour  
Members Competition: Autumn Foliage

11<sup>th</sup> Dec -AGM -Quiz & Mince Pies

We always welcome visitors & new members. So please come along to Colsterworth Village Hall at 7.30pm on second Monday in the month. More information can also be found on the "Colsterworth and Garden Club Facebook page".

Rod Young  
07836719496



# The Tollemache Arms Buckminster

01476 860477

info@tollemache-arms.co.uk

Facebook.com/tollemachebuckminster

## Oct / Nov Special

Tuesday-Friday 12pm-2pm, 6pm-7pm  
Baguette & Alcoholic Drink - £10.95  
**Christmas Menu Now Available**

### STEP BY STEP

#### Professional Footcare

Delivered in your own home

#### Treatments Include:

- Ingrown toenails & Nail Cutting
- Fungal Infections
- Corn Removal
- Hard Skin Treatments
- General Foot care

#### Contact Sabine Today

07753229992 or 01476 403147

Fully Qualified S.A.C. Dip. F.H.P  
Fully Insured DBS CHECKED

## Thorold and Kent

### TV Aerial Specialists

We Specialise in Aerial Installations

- Freeview Upgrades 
- Satellite Installations
- Radio Aerials - FM and DAB
- Storm Damage Repairs
- All Work Guaranteed 

Telephone  
01476 571507

## CJBPLUMBING & HEATING

- Bathroom design and installation
- Gas - Installation, repairs, and servicing
- Underfloor heating
- Unvented cylinders

For all your plumbing and heating needs

Please call: 07957546069

or Email: cjbplumbing1@icloud.com



## Little Legs Nursery Colsterworth

Opening hours Monday - Friday  
7am to 6pm

Nursery that offers full and part time care all year round.

For babies from birth to 11 years old.  
Holiday club.

Telephone 01476860053

Email: littlelegsteam@hotmail.co.uk

Or call in.

2 Graduate Leaders

Quality Care in a Welcoming Environment



## KWR LOGS

Small Net (collection only)

£6.50

£95 PER M3 Tipped loads

WE NO LONGER DO  
BUILDERS BAGS SORRY

kate@kwrplanthire.co.uk

0775770454

Gainsborough Corner Garage  
- established 1993 -  
will collect and deliver your vehicle  
from Colsterworth and around.

Cars & Light Commercial  
Servicing Repairs  
MoT testing Recovery  
AirCon service and repair

Troublesome code lights & diagnostics

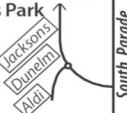
Free courtesy vehicle

GAINSBOROUGH  
CORNER GARAGE

We are here

South Parade Business Park  
South Parade  
Grantham NG31 6HT

01476 575577



### LITES PC



IT Support and  
Training for  
Home Computer  
Users and Small  
Businesses

No local call out charges  
35+ Years experience  
Friendly and Efficient  
Competitive pricing



01476 550604 / 07894 659479  
www.litespc.co.uk info@litespc.co.uk

Quality  
Websites for  
Small  
Businesses and  
Organisations



Web Site Design  
Web Site Management  
eCommerce Solutions  
Facebook/Twitter Business Setup  
Search Engine Optimisation  
Web Design Training  
Cloud Storage & Backup Setup

Free web site design  
consultations for  
local businesses



Assistance with using and configuring multiple  
devices for email and data sharing

NEW WEBSITE  NEW WEBSITE

Harrison Print

www.wgharrisonprint.co.uk

Unit 11, The Turnpike, Turnpike Close  
Grantham, Lincolnshire, NG31 7DF  
Tel 01476 562700 Fax 01476 562700  
Email wgharrisonprint@btconnect.com

FOR ALL YOUR  
PRINTING REQUIREMENTS

Michaela Forbes  
Retired Physiotherapist  
Pilates Teacher



Contact details:  
Tel 01778 571264  
Email mphysio@hotmail.com

Buckminster Village Hall  
NG33 5SB

### Pilates classes

Wednesday mornings:

- 9.30am Improvers
  - 10.45am Intermediate
  - 12.15 BEGINNERS CLASS: spaces available
- Maximum of 10 per class so book your place now to avoid disappointment
- Improve posture
  - Enhance joint flexibility
  - Strengthen core
  - Manage stress
  - No sweat

## GRAPHIC DESIGN

LOGOS | LEAFLETS | POSTERS  
MENUS | BROCHURES | ADVERTS  
INVITES | CAMPAIGNS | PRINT MANAGEMENT

Get in touch and see  
how we can support you

email: louise@life-in-pictures.com  
Tel: 01476 861703 www.life-in-pictures.com

### Decorating Services

Wallpapering  
Painting

Established For Over 20yrs  
City & Guilds trained

01476 861318  
07896 893962  
oliverwhittle@hotmail.com

## Castlegate Practice @ Buckminster

### Mark Duffree

M.Med.Sci. D.O.  
Registered Osteopath  
Laura Bayley  
M Ost

Registered Osteopath

Buckminster Yard  
Buckminster  
Grantham  
Lincs NG33 5SB

Tel: 01476 590845

Email: castlegateosteos@btinternet.com  
www.granthamosteopath.co.uk

## MUMFORD HEATING SERVICES

CALL TODAY ON 07535 977 207

WWW.MUMFORDHEATING.CO.UK



- Boiler Breakdowns
- Boiler Servicing & Installation
- Hot Water Cylinders
- Central Heating Upgrades
- Design & Installation
- Free Quotes
- No Call Out Charge



Local & Trusted No Hidden Costs

## D B Ostler Builder

For all aspects of building  
work, from a new build  
to just a garden wall,  
undertaken by a  
father & son team call

861190 or 07759 411024

Dave Ostler - your local builder for over 20 years

## P W Plumbing & Heating

Oil Boiler: Servicing & repairs/ installation  
Bathroom: design & installation  
Oil Tank: Installation & removal of old tank

Full installation of heating systems

07801 496407

For all your plumbing needs

**St John the Baptist Church, High Street  
Colsterworth, Grantham NG33 5NF**  
The parish church of Isaac Newton and his family  
Our church has been part of our community for  
more than 1000 years, with a tower added 700 years  
ago. Today it is part of a group of 7 rural parishes  
along the A1 south of Grantham. For enquiries  
please contact the Church Warden or Jo Castro  
Administrator, email: jo.yonicastro@gmail.com



Contacts: Rector In Vacancy  
Church Warden Peter Wheatley 07765126402  
Treasurer Carol Wheatley 860579  
Secretary Peter Baldock 860293  
PCC Member Hilary Winstanley 861160

**Services for October at Colsterworth church:**

1<sup>st</sup> October 11:00am Morning Prayer Fred Mann ALM  
8<sup>th</sup> October 11:00am Morning Prayer Clive Davies ALM  
15<sup>th</sup> October 11:00am Harvest Festival Revd Dr Anna Sorensen  
22<sup>nd</sup> October 11:00am Morning Prayer Steve Potts Reader  
Joint Service with Methodists  
29<sup>th</sup> October 09:00am Benefice Communion Revd Dr Anna Sorensen

OPEN DAILY 10.00am – 4:00pm for visitors, contemplation & Foodbank donations.

**HARVEST FESTIVAL: SUNDAY 15<sup>th</sup> OCTOBER 11:00AM SERVICE  
FOLLOWED BY A BRING AND SHARE LUNCH, ALL ARE WELCOME.**

**CHURCH CLEANING: TUE 10<sup>th</sup> OCTOBER 10:00AM, WITH COFFEE &  
CHAT**

**COFFEE MORNINGS 10:00-12:00:**

**NO COFFEE MORNING IN OCTOBER**

**TUE 7<sup>TH</sup> NOVEMBER HOSTS: CAROL & PETER WHEATLEY 29 HIGH ST.  
COLSTERWORTH**

For more information on services, or the church, please see social media, our website  
[www.achurchnearyou.com/church/14522/](http://www.achurchnearyou.com/church/14522/) or the Church Warden.

## Mobile Post Office

Stopping by Colsterworth Bowls Club

Mon 0900 – 1100  
Tue 0900 – 1000  
Wed 1345 – 1545  
Thu 0900 – 1100  
Fri 0900 – 1030

Contact Andy on  
01778 570221



## NORTH WITHAM VILLAGE HALL

Contact Jane Hawksworth on 07778 393872, north.witham@gmail.com  
for Village Hall matters and bookings

## Call Connect

Lincolnshire's on demand bus service  
find more information at: <https://lincsbus.info/callconnect/>

### FOR HIRE COLSTERWORTH VILLAGE HALL

For your Party, Meeting, Conference,  
Wedding Reception.

We offer Large Hall, Good Parking,  
Kitchen, Performance Stage.  
With Newly installed-Mood Lighting,  
Free Wi-Fi.

Call 07748 090655



### Colsterworth Sports & Social Club

**Now Showing Sky & BT Sports  
Function Room Available**  
for Parties, Meetings, Receptions  
**Call Debbie on 07746 067066**  
for details, bookings

**Minister:** Rev'd Neil Maynard,  
142 Princess Drive,  
Grantham, NG31 9PY  
Tel: 01476 564191  
Email: neil.maynard@methodist.org.uk  
Village Contact:  
Pamela Harrison – 01476 861864



## COLSTERWORTH METHODIST CHURCH October 2023

Our services will be in the church, however we will also be zooming at least 2 services a month from the building internet permitting. If you are interested in joining our services by zoom, please email [helenscorror@outlook.com](mailto:helenscorror@outlook.com) or phone **01476 860126** for more details.

Date	Time	Service	Preacher	Flowers
1st	11:00am	Harvest Festival	Elaine Robinson	All
8th	10:30am	Morning Worship	Deacon Ruth Hinch	Gill Dexter
15th	10:30am	Morning Worship	Worship Leaders	Gill Senescall
23rd	11:00am	United Service at St John's Parish Church	Rev'd Steve Potts	
29th	10:30am	Morning Worship	Jennie Fytche	Helen Scrorr

### Harvest Festival Lunch – Sunday 1<sup>st</sup> October – 12:15pm.

Tickets £8 per adult, £3 for under 12's. Please book your tickets by Friday 29<sup>th</sup> September via Helen Scrorr – **07921 914461**

### Open Door Lunch – Wednesday 11<sup>th</sup> & 25<sup>th</sup> October 12 Noon – 1:30pm.

Join us for a filled roll plus either a hot pudding or cake and lots of chat. We welcome people of all and no faith and of all ages to join us. Our book and jigsaw library will be available for you to browse and borrow from.

### Games/Craft & Chat Group – Wednesday 4<sup>th</sup> & 18<sup>th</sup> October – 2:00-3:30pm.

Bring your own craft along and join our group for a cuppa, a chat and maybe an opportunity to learn new skills. Or alternatively come and have a chat over a game of dominoes. Everyone welcome.

## Villages Diary October 2023

Sun	1 <sup>st</sup>	12:15pm	Harvest Festival Lunch	Methodist Church Hall
Tue	3 <sup>rd</sup>	7:30pm	Parish Council	Methodist Church Hall
Wed	4 <sup>th</sup>	2-3:30pm	Games/Craft & Chat	Methodist Church Hall
Mon	9 <sup>th</sup>	7:30pm	Garden Club	Colsterworth Village Hall
Wed	11 <sup>th</sup>	12-1:30pm	Open Door	Methodist Church Hall
Tue	17 <sup>th</sup>	2:00pm	Women's Institute	Sports & Social Club
Wed	18 <sup>th</sup>	2-3:30pm	Games/Craft & Chat	Methodist Church Hall
Fri	20 <sup>th</sup>	12:45-13:15	Mobile Library	Colster Way
Wed	25 <sup>th</sup>	12:01:30pm	Open Door	Methodist Church Hall

### November

Tue	7 <sup>th</sup>	10am-12noon	Coffee Morning	29, High Street, C'worth
-----	-----------------	-------------	----------------	--------------------------

### Weekly

<b>Mondays</b>	10am-noon	Kurling	Village Hall
	7:15pm	Bell Ringers	Church
<b>Tuesdays</b>	9:30am-11:30am	Parent & Toddler Group (Term time)	Village Hall
	6pm-7pm	Yoga	Methodist Church
	6pm-7:30pm	Cubs (Term time)	Village Hall
<b>Wednesdays</b>	5:45pm-6:45pm	Beavers (Term time)	Village Hall
	12noon-1:30pm	Open Door (2 <sup>nd</sup> & 4 <sup>th</sup> Weeks)	Methodist Church
<b>Thursdays</b>	2pm-3:30pm	Craft & Chat (1 <sup>st</sup> & 3 <sup>rd</sup> Weeks)	Methodist Church
	10am-noon	Kurling	Village Hall
<b>Fridays</b>	7pm-8:30pm	Scouts (Term time)	Village Hall
	7:30pm-9:30pm	Weekly Bingo	Sports & Social Club
<b>Saturdays</b>	10am-12noon	Football Coaching	Sports Field

### Copy for next month's issue of In Touch must arrive by noon on Saturday 14th October 2023

Email contributions to [InTouchCopy@gmail.com](mailto:InTouchCopy@gmail.com)

The deadline date is final and copy may not be included if there is a shortage of space. Please submit your copy as early as possible.

Images and/or artwork submitted in digital formats **MUST** be at a resolution of 300dpi.

Ensure that you put your contact details on any submission.

Send or deliver hard copy to **5 Stephenson Close, Colsterworth NG33 5GP (Tel:07773 230815).**

Remember to give dates of future meetings if you want them to appear in the Villages' Diary.  
The Publishers accept no responsibility for goods or services advertised in sale in this magazine. The acceptance of advertising does not in any way imply that the advertiser is endorsed by the Publishers.

Published by Colsterworth and District Parish Council ©2023