

# In Touch

<https://colsterworth.parish.lincolnshire.gov.uk/>

News for the villages of Colsterworth, Woolsthorpe, Stainby, Gunby, North Witham and Lobthorpe

Edited by Stuart Whitcombe 5 Stephenson Close, NG33 5GP 0777 323 0815 InTouchCopy@gmail.com



If you or someone you know is unable to visit the library due to mobility, age or health related issues then our free Access Service can arrange for books to be delivered straight to your door.

Large Print, Normal Print and Audio Books available.

For more information please contact Lincolnshire Mobile Library Service:  
Tel: 01522 782010

Email: [benjamin.tatton@gll.org](mailto:benjamin.tatton@gll.org)

@lincslibraries

**Lincolnshire**  
COUNTY COUNCIL  
*Working for a better future*

**BETTER**

## Mini Fete

Saturday 8<sup>th</sup> July  
2-4pm  
at

Colsterworth Methodist Church

A Warm Welcome Awaits

Homemade cakes

Book

Jigsaws

Bric-a-brac

Refreshments

Games

**Meadow Chimney Sweeping Services**  
Craig Groves  
07803 127 437  
01476 385 285  
[meadowchimneysweep@hotmail.co.uk](mailto:meadowchimneysweep@hotmail.co.uk)  
Colsterworth, Lincolnshire  
Open Fires, Wood Burners, Gas & Oil Flues swept using latest powered technology & vacuumed



**Walters**  
Moves you to Move  
**Thinking of Selling?**  
Call us on 01476 856 356  
for a FREE market appraisal

## The Tollemache Arms

Buckminster  
01476 860477  
[Tollemache-arms.co.uk](http://Tollemache-arms.co.uk)  
[Facebook.com/tollemachebuckminster](https://www.facebook.com/tollemachebuckminster)

### Senior's Lunch Offer

Tuesday-Friday 12pm-2pm  
One Course £8 - Two Courses £11 - Three Courses -£14

### Pitcher Offer

Four pints for the price of three on all beers and lagers

19th century country inn with 4 en-suite rooms, spacious beer garden and open fire. Available to hire for functions.

**FOR HIRE**  
**COLSTERWORTH VILLAGE HALL**  
For your Party, Meeting, Conference, Wedding Reception.  
We offer Large Hall, Good Parking, Kitchen, Performance Stage.  
With Newly installed-Mood Lighting, Free Wi-Fi.  
Call 07748 090655

**Colsterworth Sports & Social Club**  
Now Showing Sky & BT Sports  
Function Room Available for Parties, Meetings, Receptions  
Call Debbie on 07746 067066 for details, bookings

## White Lion

High Street, Colsterworth  
01476 861466  
[www.whitelioncolsterworth.co.uk/](http://www.whitelioncolsterworth.co.uk/)

	Open	Food
Mon	12-9pm	12-8pm
Tue	6-11pm	No food
Wed	12-9pm	12-8pm
Thu	12-11pm	12-9pm
Fri	12-11pm	12-9pm
Sat	12-11pm	12-9pm
Sun	12-8pm	12-6pm

**LITES PC**  
IT Support and Training for Home Computer Users and Small Businesses

No local call out charges  
30+ Years experience  
Friendly and Efficient  
Competitive pricing

Wireless & Network Setup  
PC Maintenance & Repair  
Tablet support & training  
PC Training - ALL levels  
Broadband configuration  
IT Equipment Sales  
Media conversion video/audio

01476 550604 / 07894 659479  
[www.litespc.co.uk](http://www.litespc.co.uk) [info@litespc.co.uk](mailto:info@litespc.co.uk)

Quality Websites for Small Businesses and Organisations

**WEBSITES**

Web Site Design  
Web Site Management  
eCommerce Solutions  
Facebook/Twitter Business Setup  
Search Engine Optimisation  
Web Design Training  
Cloud Storage & Backup Setup

Free web site design consultations for local businesses

Assistance with using and configuring multiple devices for email and data sharing

- Landscaping
- Groundwork
- Concreting
- Fencing
- Garden/Retaining Walls
- Tractor Mounted Hedge Cutting

**Robert Duffin**  
HEDGE LAYING FENCING & GROUNDWORK

T: 01572 787 632 M: 07834 243 966  
Email: [rob\\_duffin@hotmail.com](mailto:rob_duffin@hotmail.com)  
[www.robduffin.com](http://www.robduffin.com)

# Parish Council Report

Parish Clerk - 01476 861888  
clerk@colsterworthanddistpc.co.uk

## Your headlines from the Parish Council (PC) Meeting 6<sup>th</sup> June 2023

Full minutes and reports are available on the Colsterworth and District Website (Search "Colsterworth and District Parish Council" and find the agendas and minutes under "Council Business": Council business – Colsterworth and District Parish Council (lincolnshire.gov.uk)

### **PUBLIC FORUM:**

Chairperson C Hainsworth welcomed the three members of the public present. The first members of the public spoke in relation to an overgrown grass verge on Bourne Road, explaining that they had been in contact with Lincolnshire County Council (LCC) Highways regarding this. Clerk to the Parish Council S Grant stated that they had been made aware that the grass verge was not being maintained by the householder and that the LCC Highways department were arranging to include the area on their plans going forward from being shown as cut by others to being added to the Parish Council Contractors schedule. The Contractor has been informed to cut the area. The second member of the public stated they had attended in support of the above and did not wish to speak. The third member of the public spoke in support of their application for Co-option as Parish Councillor for Colsterworth, agenda item 2023.22. Chairperson C Hainsworth invited the member of the public to stay until the agenda item was discussed.

Full details of the public forum can be found on the website above.

### **CHAIR'S REMARKS:**

Chairperson C Hainsworth welcomed everyone to the meeting stating that they had no significant remarks and moved to the next agenda item.

### **Lincolnshire County Council and South Kesteven District Councillors Report.**

LCC Cllr C Vernon sent their apologies.

SKDC Cllr D Bellamy Reported: -

1. The Environmental Health department had visited the local businesses and fast-food outlets off the A1/A151 flyover and removed several items of rubbish and fly tipping.
2. They reported that an officer from the Planning Department had offered to arrange a remote meeting with Cllrs regarding the Section 106 agreement for the Bourne Road Development S18/2379.

Cllr B Green Reported: -

1. It was great to be back to do their best for the Parish Council over the next four years.
2. A1 Cleaning – Following the recent elections they were encouraging the new administrations to make cleaning the A1 in the Grantham areas a priority. They reminded the Parish Council that the Litter Abatement Order can be triggered to compel the District Council to clean the area.
3. They are still working towards getting a PCSO to attend a meeting at Colsterworth.

### **Co-Option for Cllr for Colsterworth**

Mr Ken Vickers was unanimously approved as Cllr for Colsterworth.

### **In Touch Magazine Printing Material**

Agreed by the majority with one member abstaining to keep the current silk material.

### **Allotments**

It was resolved to allow dogs on both allotment sites Stamford Road and Woolsthorpe Road until further notice subject to the rules agreed at the Parish Council meeting 7<sup>th</sup> March agenda item 2022.165.

### **Updates for Council administration**

1. F & A meeting minutes 25/05/2023 submitted to council for full assurance.

2. Resolved to approve the CAD Financial Reserves Policy – no changes.

### **Finance**

Accounts for payment were approved by Council.

### **Nature Trail**

After the recent Bank Holiday Monday's in May the volunteers were back to work on Monday 5<sup>th</sup> June planting bulbs including wild garlic. On Tuesday 6<sup>th</sup> June a group of 16 of the volunteers enjoyed a day trip arranged by the Nature Trail Lead Ranger Mo Taylor to the Battle of Britain Memorial Flight visitor centre at Coningsby. The volunteers enjoyed complimentary refreshments on arrival and were given a private guided tour of the centre. Thank you to Mo Taylor for organising this very interesting and informative day.

### **Clerks Report & day to day business.**

1. Missing child's basket swing seat on Colster Way Play area reported to the Police. Crime ref: 23000284228. The Clerk is sourcing a replacement basket seat.
2. Hilltrident contacted several times for an update on replacement hinges for the gate at Colster Way Play Area.
3. Police Priority Form for June forwarded to Lincs Police.
4. Neither SKDC or LCC are responsible for maintaining the street lights on Apple Tree Close. They are the responsibility of the housing association. Housing association contacted by the Clerk.
5. Vegetation from trees causes poor visibility for drivers and pedestrians when entering/emerging Bourne Road Estate and Bourne Road junction. FMS report made. Highways have cut back branches, message received no further action required.
6. Overgrown vegetation on Footpath 7 and 21 reported to LCC Rights of Way. Reports no's 1878013, 1878294 & 1878295.
7. The Parish Council will arrange for the overgrown vegetation from Chestnut Grove to China Moon to be trimmed back if the ROW deadline is too long.

### **Correspondence received**

Council received details of correspondence received relating to speeding vehicles, lack of police presence, fly tipping and potholes.

### **SKDC Planning Applications**

S23/0657 - Restoration works to the River Witham floodplain, Location: Old Post Lane, Grantham, Colsterworth.

### **SKDC Planning Permission**

S23/0894 - Non-material amendment to planning permission S21/1906 to enable the introduction of an additional buff brick to the development. Location: Centre Of Pond 80M From 68

Bourne Road 23M From A151, Bourne Road, Colsterworth.

S20/0812 - Submission of details reserved by Condition 3 (Landscaping of).

S22/0480 - Change of use from agricultural paddock to equestrian including erection of stable building and yard). Tower Hill Farm Water Lane, Stainby.

S23/0573 - Single storey extension to rear. 2 Witham View Colsterworth, Lincolnshire NG33 5SU.

S23/0943 - Submission of details in relation to condition 11 (Footway scheme of).

S18/2379 - (Outline planning application for the erection of up to 70 dwellings, associated acoustic bund, vehicular and pedestrian accesses, public open, space, landscaping and drainage with all matters reserved).

S23/0583 - on illuminated signage comprising 15no. flags, 1no. 'coming soon' advertising board, 1no. V (2 Signs) 'coming soon' advertising boards, 1no. visitor parking board and 2no. 'welcome to' advertising boards. Centre Of Pond 80M From 68 Bourne Road 23M From A151, Bourne Road, Colsterworth.

Section 106 Agreement

S18/2379 - S106 received 01/06/2023. Referred to Planning Committee.

## Highways and Footpaths Report (Cllr C Hainsworth)

Circulated and uploaded to the Parish Council website.

## Environment and Amenities Working Group Report - War Memorial Project Update (Cllr T Neale)

Cllr T Neale handed out the notes of the joint Parish Council and Colsterworth Festival of Remembrance (CFoR) War Memorial Restoration Project Working Group remote meeting 18/05/2023 and followed up with a verbal report on the Grant application and fund-raising progress.

Clerk to the Parish Council S Grant highlighted to the Cllrs that if the Project progresses to the payment of works Cllrs will need to agree to the VAT element to be covered by the Parish Council from reserves (for an anticipated period of two months) until the VAT 126 reclaim could be submitted and received in the Parish Council bank account.

## Planning Committee Neighbourhood Plan Review is in process Matters Requiring attention.

Cllr D Bellamy reported overgrown footpath at the rear of St Mary's Church, North Witham. Post meeting 07/06/2023 note reported to LCCROW reference is 1881233.

## Date of next Parish Council Meeting

Just before closing the meeting a member of the public arrived and reported damage to a swing on Colster Way Children's play area. The Clerk agreed to investigate this.

**Date of the next Parish Council meeting is Tuesday 4<sup>th</sup> July 2023. Methodist Church Hall, Back Lane, Colsterworth.**

## COMMUNITY SPEED WATCH



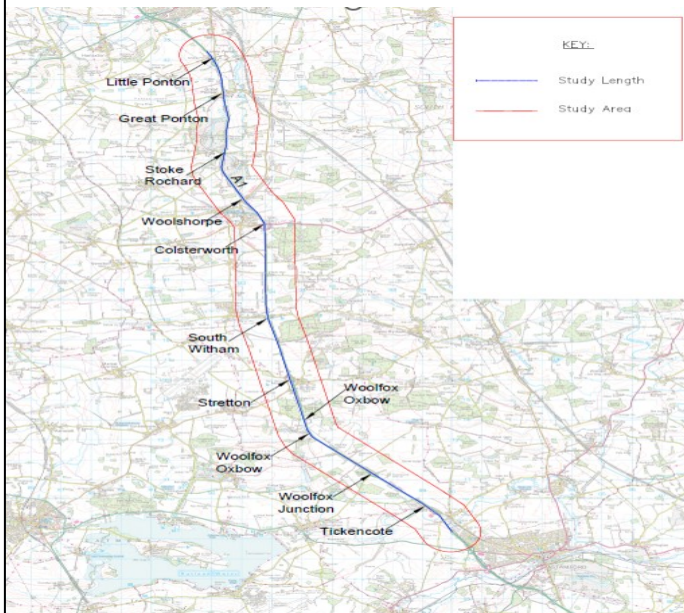
## Lincolnshire Road Safety Partnership

The Parish Council operates a Community Speed Watch scheme run by the Lincolnshire Road Safety Partnership, the scheme relies on volunteers who want to make a positive difference in their town or village which is run by volunteers. The Community Speed Watch (CSW) scheme aims to tackle local speeding issues. It allows residents to become police-trained volunteers to monitor vehicle speeds in their communities, with the aim of changing the behaviour of road users who drive above the speed limit through small towns and villages.

You must be at least 18 years of age to join. Volunteers are not subject to any form of police checks but will need to undertake training with a police-approved trainer.

The Parish Council is currently looking for more volunteers and a CSW co-ordinator. If you are interested in becoming a CSW volunteer then please contact the Clerk to the Parish Council, Sue Grant by email [clerk@colsterworthanddistpc.co.uk](mailto:clerk@colsterworthanddistpc.co.uk) or tel; 01476 861888.

## NATIONAL HIGHWAYS SURVEY SAFETY IMPROVEMENT SCHEME A1 LITTLE PONTON TO TICKENCOTE



National Highways are currently carrying out a walking, cycling and equestrian assessment along a section of the A1 between Little Ponton and Tickencote in Lincolnshire and Rutland as part of a proposed safety improvement scheme along this stretch of the A1.

They would welcome any comments you have with regards pedestrian/cycling or equestrian routes close to or adjacent to the A1 to input into this report.

The purpose of the report is to identify any opportunities for improvements that could be included within the future safety scheme, subject to funding available.

The location plan showing the study area can also be accessed on the Parish Council website <https://colsterworth.parish.lincolnshire.gov.uk/downloads/file/800/a1-between-little-ponton-and-tickencote-national-highways-survey-map>

Please email your comments to [area7safetyteam@nationalhighways.co.uk](mailto:area7safetyteam@nationalhighways.co.uk)



## Colsterworth & District Parish Council

## Parish Councillor Casual Vacancy

**COLSTERWORTH x 2**

**GUNBY and STAINBY x 2**

Parishioners/Residents willing to be co-opted or stand for election to the Parish Council should make application to:

Sue Grant, Clerk to Colsterworth and District Parish Council. email: [clerk@colsterworthanddistpc.co.uk](mailto:clerk@colsterworthanddistpc.co.uk) Tel: 01476 861888

Applications must be received by Friday 18<sup>th</sup> August 2023

## Temporary traffic restriction: North Witham

Reference: TTRO/TTR003707

Please note it will be necessary to impose a temporary restriction as detailed below.

Organisation responsible for restriction: National Grid Electricity Distribution

Reason for restriction: Overhead line defect repairs

Nature and location of restriction:

Road closure Order - Rectory Lane

Period of restriction: 06/07/2023 - 06/07/2023, 09:00 to 17:00

(Restrictions to be implemented for 1 days as and when required during this period, signage detailing accurate dates and times will be displayed on site in advance)

Alternative route or access arrangements:

Diversion routes and vehicular or pedestrian access arrangements will be signposted.

This information is also available in map form at <https://one.network/>

If you have any queries, or require further information, please contact the LCC Customer Service Centre on **01522 782070**.

# theWI

## INSPIRING WOMEN

### Colsterworth Women's Institute May Meeting

Our May meeting was mainly taken up by the explanation of the resolution which we had to vote on. Explaining all the "fors" and "against", our member Helen did an admiral job giving us lots to discuss the pros' and cons' before we took the vote, and gave discretion to our delegate, Sandra to change our vote should there be an amendment at the annual meeting which she will be attending at Cardiff later in May. We shall be interested to see what other institutes have made of this year's choice of resolution.

We were able to relax with some delicious cakes, fruit and other "naughty nibbles", all prepared and served buffet style, washed down with a welcome "cuppa" after all the talking. Final calls were made for events arranged by County Federation, bulb orders, and take-a-chance lottery. Competition winner of the "flower of the month" was Rosemarie, and Sandra the "runner up". The other competition (for those less green fingers than the flower girls) was won by Rosemarie, (she is very versatile), for an item coloured orange and yours truly, the runner up.

Our next meeting on June 20<sup>th</sup> we will see the return of Graham Evans, the one who gave us all the details In the Life of a Race Horse, but this time his talk will be of his trip down "The Rockies" and we will give a report of this in the July In Touch.

Our July meeting on the 18<sup>th</sup> will have the "Tales of a Wimbledon Umpire" speaker Alan Gray. The competition will be an item coloured brown. We should be pleased to welcome you at the Sports & Social Club at 2.00 pm. There will be the usual "naughties" to accompany the "cuppa", love to see you there.

*Dot Williams*

## East Mercia Rivers Trust

East Mercia Rivers Trust (EMRT) is an independent charity formed in September 2022 following the merger of Welland Rivers Trust and Lincolnshire Rivers Trust (established 2011 and 2013 respectively). We operate across both the rivers Witham and Welland catchments, working to achieve our mission of Bringing rivers back to life for nature and communities. Gail Talton, EMRT's Witham Project Manager, is currently working on a project in Colsterworth, immediately south of Stainby Road, with the aim of restoring river and wetland, floodplain habitat along a 1.3 km of the Upper Witham. This will primarily be achieved by carefully lowering areas near to the river and adding much needed trout spawning gravels to the river channel. The work will create more diverse habitats that will benefit a variety of river and wetland species, including native white-clawed crayfish, water voles and brown trout as well as helping create more space for water.

As we are becoming more aware, climate change is felt most powerfully through water, flooding, extreme weather, pollution, and drought. Most of the world will be living with water stress within the next few years. Lincolnshire is known to be the most vulnerable region in the UK to climate change. Furthermore, from sewage to drought, rivers have been featured much in our national newspapers. With no river classed as good in England we need to double down on efforts to restore and enhance our watercourses. This project, which is seeking funding from both the Environment Agency and Anglian Water, will endeavour to address this in a small way and will complement other projects along the Upper reaches of the Witham. Collectively these projects can be linked up to make a big difference for people and wildlife.

If you would like to find out more about this project or the work we do at EMRT please contact [gail@eastmercia.org](mailto:gail@eastmercia.org) or visit our website [www.eastmercia.org](http://www.eastmercia.org)

## Spotlight On....

At the Annual Parish Council meeting on 23 May 2023, we had the pleasure of hearing talks from the Environment Agency, WI and Colsterworth Festival of Remembrance. Also attending was Helen Scorrer from the Methodist Church – so this month "SPOTLIGHT ON" would like to acknowledge all the events and activities provided to support the community by the Colsterworth Methodist Church situated on the corner of Back Lane and The Ropewalk.

### "What do we do?"

Services are every Sunday at 10.30am but on 5<sup>th</sup> Sunday of the month we have a united service with St John the Baptist Church which alternates venues plus a couple of times a year we have a joint service at Skillington Methodist Church.

As our church is not open on a daily basis, we do not leave our flowers in the church but gift them to villagers who are unwell, celebrating a birthday, birth or anniversary, or mourning a loved one. We welcome information about anyone who would benefit from receiving our flowers.

**Open Door:** This started in October 1989 and has changed format and frequency over the years but we still offer a warm welcoming place which is open to all ages, and faiths. Currently on 2<sup>nd</sup> & 4<sup>th</sup> Wednesday of the month from 12 noon – 1.30pm. We offer a filled roll, slice of cake or a pudding plus drinks for a cost of £3.50. Everyone is welcome to just come for a cuppa!

**Craft Group:** Started in 2017 and held on the 1<sup>st</sup> & 3<sup>rd</sup> Wednesday of the month from 2.00 – 3.30pm. People bring their own craft. Charge is £1 for a cuppa and biscuit but is open to all ages.

At both the Craft Group and Open Door, people are welcome to browse and borrow from our lending library of books and jigsaws.

### Use of the Hall:

Our hall is used weekly for a yoga class, monthly for Parish Council meetings and Helen's Helping Hands coffee mornings and annually for the Colsterworth Music Festival and is also available for hire for children's birthday parties, etc.



# NATURAL HISTORY BULLETIN

An interesting e-mail was sent in on 1st June 2023. It described a 'Tree For Life' planting at Woolsthorpe Manor in about 1997. The tree was a Walnut, a species known to grow rapidly in its first year. A photo from the Grantham Journal which recorded the event, was included showing the person who sent the record as a little girl with her parents and grandmother.

Trees planted at this time by local schoolchildren were also grown by them from seed. They include those along the Stamford Road. Now well grown, producing flowers and fruit, they are contributing to a healthy environment for us as well as wildlife.

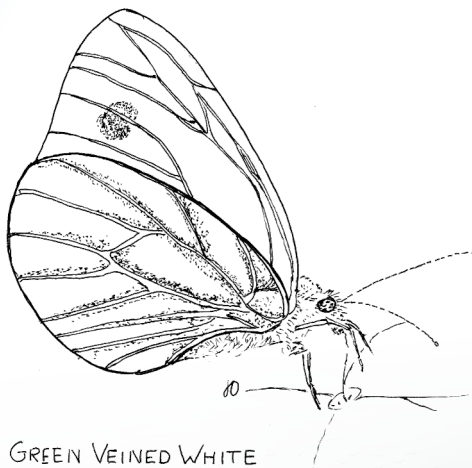
An Early Marsh Orchid has appeared on verges in the Woodlands estate area, for the first time since they were managed for the limestone plants. Cutting is left till later in the year. In June the flowers are at their best with Bee Orchids out and some dozen other species tucked low amongst the grasses. This year Oxeye Daisies are both abundant and taller than usual. The edges of the areas are kept tidy and a path cut through in one area to avoid trampling. There are periods when some people may regard the area as looking untidy but the neat and attractive gardens which border the verges show that there is no neglect. Thankyou to all the people involved over the years.

The most dramatic of all our plants (excepting trees and shrubs) is growing on a local verge. The Giant Hogweed can have flower heads the size of dinner plates, grow to 4 metres high and have stems up to 10cms thick. It was introduced as a garden curiosity in 1820. But beware! Contact with its lobed leaves can make the skin sensitive to sunlight

causing burning. It is eradicated in places where it may come into contact with people.

Every plant, like every animal has a tale to tell. Forget-me-nots beginning to seed have lost the yellow collars round their flower centres. Once pollinated they stop producing nectar. The change fades this insect attractant so neither the plant nor a visiting insect wastes their energy. The Horse Chestnut blushes, the forget-me-not fades.

It was a sharp pair of eyes which spotted white 'fruits on blackthorn. These are known as 'pocket plums'. A gall forming fungus parasitizes the black berries of sloe, swelling them and covering them with white spores. They can also infect plum trees. Usually not common some years every fruit seems to be affected.



GREEN VEINED WHITE

At the time of writing this (10/06/2023) we have had a long period of cold winds and cloudy days. Butterflies have been in short supply. Twyford Wood Butterfly Reserves are important for the variety of species found here. The list for May includes Grizzled Skipper, Dingy Skipper, Small Heath, Brown Argos, Green Hairstreak Common Blue. On the Nature Trail a single Green Hairstreak and one Small Copper were seen sheltering low in the grass, but there were nine Speckled Woods in the short space of a sheltered

ride. They were all flying, some dancing in pairs. It is in our gardens that we have noticed less activity. Records are of Orange Tips, 'Whites' and Holly Blues. The last named seem to be having a good year. Two people have had the opportunity to identify Green Veined white with their wings closed. This not only helps in identification but a splendid photograph also shows the variations which can occur. The colour is not always greenish but blackish-grey and spots on forewings may be faint. There continues to be reports of Humming Bird Hawkmoths seen on garden flowers,

Lizards seen on an allotment, on a stone wall in a garden and at Twyford wood which also has Slow worms and Grass Snakes

Some better news of migrants. Swifts are back in their usual numbers and back at their known sites in roofs, some House Martins nesting. A number of Cuckoos heard in various places in our area. More known about warblers from those of you who can recognise their songs. Those of you who are able to make observations in your own gardens, especially now young birds can be seen being fed, are adding much to our knowledge of what some may consider to be more common birds.

## To Look For Next Month

Second broods of birds and I will put more on garden findings next month. Any young Great Spotted Woodpeckers with their red caps? Dragonflies and Damselflies, Grass Snakes which will seek water. Still hoping to hear of a Spotted Flycatcher. Swifts come late, leave early. Young go first in July. So much happening for those who seek it out. Thankyou to you all and I look forward to hearing from you at **61 Woolsthorpe Rd, 860465**, e-mail: [jnostler@hotmail.co.uk](mailto:jnostler@hotmail.co.uk)  
*Jane Ostler*

## Dog waste bins provided by the Parish Council which are situated in the following locations.

Old Post Lane junction Water Lane  
West End of the Nature Trail  
The Nature Trail behind Woolsthorpe Play Area  
Footpath 18 near river  
Stamford Road near allotment  
School Lane where it meets footpath 20



If the Parish Council Dog waste bins are full you can use an SKDC litter bin with the dog waste accepted logo.

## OptionsAutism

Recruiting now  
Become an Adult Care Worker with Options Autism at Millfield House in Colsterworth, Lincolnshire.  
Salary – Please contact us for latest rates of pay.  
42.5 hours per week over a 2 week rota.  
Phone **01476 860270** for an informal chat or visit our website [www.outcomesfirstgroup.co.uk](http://www.outcomesfirstgroup.co.uk)

We are committed to the safeguarding and promoting the welfare of children, young people and adults. All successful applicants will be subject to fully Enhanced DBS.

## Great Ponton Church of England Primary School

Cleaner required (Part Time)

3 hours per day, 5 days per week, 40 weeks per year, Grade G1.02

Would you like to join a happy, successful school?

We are seeking to appoint a committed and enthusiastic cleaner. We can provide training but some previous experience in a similar role would be an advantage.

We are looking for people to join our hardworking, professional and supportive school who:

- Can work under their own initiative
- Have high regard for the standards of cleanliness and safety within school
- Will complete statutory monitoring paperwork promptly and accurately
- Are open to new training and approaches
- Are able to work alone and be responsible for the security of the building

Further information about the school is available on the school website at:

<http://www.greatpontonprimaryschool.co.uk/> or call 01476 530306

Please request an application pack from Mr Keith Leader, Headteacher, at

[keith.leader@greatponton.lincs.sch.uk](mailto:keith.leader@greatponton.lincs.sch.uk) or on 01476 530306

Here at Great Ponton, we want our workforce to reflect the make-up of the community we serve. Therefore, we welcome all applications irrespective of gender, ethnic origin, belief, sexual orientation, age or disability.

**We are committed to safeguarding and promoting the welfare of young people and expect all staff share this commitment.**

**All posts will be subject to an enhanced DBS disclosure, medical and reference checks.**

**Applicants may be subject to a social media presence check.**

**All Pre-employment checks are in line with "Keeping Children Safe in Education".**

**APHRODITE**  
Professional Hair Stylist

LOUISA SALTER  
Mobile & Salon  
07902615752  
Email: [louisa.salter@gmail.com](mailto:louisa.salter@gmail.com)



COLSTERWORTH  
FESTIVAL OF  
PERFORMING ARTS

**A.G.M 2023**

**4:00pm**  
**Sunday, 30<sup>th</sup> July**  
**Colsterworth**  
**Methodist Church**  
**Back Lane NG33 5NJ**  
**All Welcome**

**AN ADVERT**  
**THIS SIZE**  
**COSTS ONLY**  
**£59.50**  
**FOR**  
**12 MONTHS**  
*InTouchCopy@gmail.com*

## FOCUS New Age Kurling Group

Although it seems a while ago, Focus group celebrated the Coronation in its usual friendly manner. Both Groups held their very own celebrations starting with the Monday group.

The Committee's thanks go out to Rosemary for organising the event and for John Hicks who entertained on his accordion and harmonica. Members donated food and drink and after playing Kurling settled down to enjoy the event, which was enjoyed by all. The Thursday group sends its thanks to Stephen for organising this event, and as like the Monday Group, spent the first hour enjoying Kurling followed on by the celebrations.

Members again donated food and drink and the whole event was enjoyed by all.

The Committee has been forward planning for the annual BBQ which is scheduled for Monday 7<sup>th</sup> August. The Committee would like to offer our advance thanks to Francis who is again lending his many years of experience in helping the committee to organise this annual event by lighting the fire and cooking the meat.

The Christmas Lunch venue has been confirmed as The Barnsdale Lodge. The date for this event is set for Tuesday the 12<sup>th</sup> December.

With regard to Kurling membership, we would like to welcome our new Members, Stephen and Lillian, who we hope will enjoy Kurling as much as the rest of us. As a Committee, we are looking to see if there is any requirement for an additional New Age Kurling Session to be held one evening in the week. It is felt that this would open this very fun and social activity to the larger community who are unable to partake because of work or family commitments. If this is something you would like to try, we are willing and able to offer an open evening/taster session subject to there being sufficient interest. Please contact me on 07931 345932 in order to register your interest and to obtain further information. Please register your interest with me by the end of June.

*Christine Cope*  
Secretary

07931345932  
[Christine.cope7@gmail.com](mailto:Christine.cope7@gmail.com)

## COLSTERWORTH & DISTRICT GARDENERS & ALLOTMENT HOLDERS ASSOCIATION



The June event was a visit to Lynne Barnes's gardens at Newton, who was our Speaker in July 2022 where she talked to us about "Planning & Planting an Herbaceous Bed. Lynne explained the development of her 3 acre garden over the past 20 years, the different herbaceous beds that have been planted. So were able to view it first hand and appreciate the scale of the work undertaken. We had a lovely evening and refreshments, on an evening when the thunder storm that hit Colsterworth but luckily by passed Newton.

So our next meeting will be the 10<sup>th</sup> July at Colsterworth Village Hall.

### Future Dates.

10<sup>th</sup> July – Lucienne Bennett – Designing & Planting a Garden

9<sup>th</sup> Sept – Annual Horticultural & Craft Show

11<sup>th</sup> Sept - Camilla Anderson, Stately Gardens of England,

9<sup>th</sup> Oct – Russell Attwood - A Passion for Pumpkin

13<sup>th</sup> Nov – Karen Gibson – 365 Days of Colour

We always welcome new members. So please come along to Colsterworth Village Hall at 7.30pm on second Monday in the month. More information can also be found on the "Colsterworth and Garden Club Facebook page".

Rod Young  
07836719496

## EweMove Sleaford & Grantham South Rated 5 Star By Local Sellers & Landlords



**EweMove**  
SALES AND LETTINGS

"Hi I'm Rachel, I'm here to help with your property needs."



To Get Your **FREE** Online Valuation Report  
Visit: [www.EweMove.com/GranthamSouth](http://www.EweMove.com/GranthamSouth)  
Or Call 24/7: **01476 858 570**

### STEP BY STEP

#### Professional Footcare

Delivered in your own home

#### Treatments Include:

- Ingrown toenails & Nail Cutting
- Fungal Infections
- Corn Removal
- Hard Skin Treatments
- General Foot care

#### Contact Sabine Today

**07753229992 or 01476 403147**

Fully Qualified S.A.C. Dip. F.H.P  
Fully Insured DBS CHECKED

## Thorold and Kent

### TV Aerial Specialists

We Specialise in Aerial Installations

- Freeview Upgrades 
- Satellite Installations
- Radio Aerials - FM and DAB
- Storm Damage Repairs
- All Work Guaranteed 

Telephone  
**01476 571507**

## Pilates classes

Buckminster Village Hall  
NG33 5SB

Wednesday mornings  
9:30am Improvers 10:45am Intermediate

Improve posture Enhance joint flexibility  
Strengthen core Manage stress No sweat

Maximum of 10 per class so book  
your place now to avoid disappointment

STARTING APRIL 2023  
12:15 NEW BEGINNERS CLASS  
Spaces available

**Michaela Forbes**   
Retired Physiotherapist  
Pilates teacher

Contact details  
01778 571264

e.mail [mphysio@hotmail.com](mailto:mphysio@hotmail.com)

## GRAPHIC DESIGN

LOGOS | LEAFLETS | POSTERS  
MENUS | BROCHURES | ADVERTS  
INVITES | CAMPAIGNS | PRINT MANAGEMENT

Get in touch and see  
how we can support you

email: [louise@life-in-pictures.com](mailto:louise@life-in-pictures.com)  
Tel: 01476 861703 [www.life-in-pictures.com](http://www.life-in-pictures.com)

### Decorating Services

#### Wallpapering Painting

Established For Over 20yrs  
City & Guilds trained

01476 861318  
07896 893962  
[oliverwhittle@hotmail.com](mailto:oliverwhittle@hotmail.com)



## CJBPLUMBING & HEATING

- Bathroom design and installation
- Gas - Installation, repairs, and servicing
- Underfloor heating
- Unvented cylinders

For all your plumbing and heating needs

Please call: 07957546069  
or Email: [cjbplumbing1@icloud.com](mailto:cjbplumbing1@icloud.com)



## Little Legs Nursery Colsterworth

Opening hours Monday - Friday  
7am to 6pm

Nursery that offers full and part time  
care all year round.

For babies from birth to 11 years old.  
Holiday club.

Telephone 01476860053

Email: [littlelegsteam@hotmail.co.uk](mailto:littlelegsteam@hotmail.co.uk)

Or call in.

2 Graduate Leaders

Quality Care in a Welcoming Environment



## KWR LOGS

Small Net (collection only)

£6.50

£95 PER M3 Tipped loads

WE NO LONGER DO  
BUILDERS BAGS SORRY

[kate@kwrplanthire.co.uk](mailto:kate@kwrplanthire.co.uk)

07775770454

## COLSTERWORTH

*Festival of Remembrance*

### Military Plaques Required

Have you ever served in the Armed Forces or  
have a family member that has in the past? If  
so then we would love your contributions to  
our military wall within the White Lion.

If you have any Unit, Division, Corps or Single  
Service plaque then we would love to see them  
placed on the village military wall.

Any donations to Bob Prentice

This is in support of the Colsterworth Festival  
of Remembrance (CFor).

Any questions to David Heath French at  
[davidheathfrench@gmail.com](mailto:davidheathfrench@gmail.com)



[www.cfor.org.uk](http://www.cfor.org.uk)

Gainsborough Corner Garage  
- established 1993 -  
will collect and deliver your vehicle  
from Colsterworth and around.

Cars & Light Commercial  
Servicing Repairs  
MoT testing Recovery  
AirCon service and repair

Troublesome code lights & diagnostics

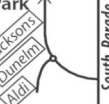
Free courtesy vehicle

## GAINSBOROUGH CORNER GARAGE

We are here

South Parade Business Park  
South Parade  
Grantham NG31 6HT

01476 575577



## PIANO, KEYBOARD AND FLUTE LESSONS

VANESSA JACKSON  
BA HONS/PGCE  
EXPERIENCED TEACHER  
DBS CHECKED

MOB. 07857 810518

email [vanessajackson@outlook.com](mailto:vanessajackson@outlook.com)  
Online lessons available

NEW WEBSITE  NEW WEBSITE  
Harrison Print

[www.wgharrisonprint.co.uk](http://www.wgharrisonprint.co.uk)

Unit 11, The Turnpike, Turnpike Close  
Grantham, Lincolnshire, NG31 7DF  
Tel 01476 562700 Fax 01476 562700  
Email [wgharrisonprint@btconnect.com](mailto:wgharrisonprint@btconnect.com)

FOR ALL YOUR  
PRINTING REQUIREMENTS

AN ADVERT  
THIS SIZE  
COSTS ONLY  
£59.50

FOR  
12 MONTHS  
[InTouchCopy@gmail.com](mailto:InTouchCopy@gmail.com)

## Castlegate Practice @ Buckminster

### Mark Duffree

M.Med.Sci. D.O.  
Registered Osteopath

### Laura Bayley

M Ost

Registered Osteopath

Buckminster Yard  
Buckminster  
Grantham  
Lincs NG33 5SB

Tel: 01476 590845

Email: [castlegateosteos@btinternet.com](mailto:castlegateosteos@btinternet.com)  
[www.granthamosteopath.co.uk](http://www.granthamosteopath.co.uk)

## MUMFORD HEATING SERVICES

CALL TODAY ON **07535 977 207**

[WWW.MUMFORDHEATING.CO.UK](http://WWW.MUMFORDHEATING.CO.UK)



- Boiler Breakdowns
- Boiler Servicing & Installation
- Hot Water Cylinders
- Central Heating Upgrades
- Design & Installation
- Free Quotes
- No Call Out Charge



WORCESTER  
Accredited Installer



Local & Trusted No Hidden Costs

## P W Plumbing & Heating

Oil Boiler: Servicing & repairs/ installation  
Bathroom: design & installation  
Oil Tank: Installation & removal of old tank

Full installation of heating systems

**07801 496407**

For all your plumbing needs

**St John the Baptist Church, High Street  
Colsterworth, Grantham NG33 5NF**  
The parish church of Isaac Newton and his family.  
Our church has been part of our community for more than 1000 years, with a tower added 700 years ago.  
Today it is part of a group of 7 rural parishes along the A1 south of Grantham. For enquiries please contact the Church Warden or Kim John Administrator, email: colstgroup.churches@aol.com



Contacts: Rector In Vacancy  
Church Warden Peter Wheatley 07765126402  
Treasurer Carol Wheatley 860579  
Secretary Peter Baldock 860293  
PCC Member Hilary Winstanley 861160

**Services for July at Colsterworth church unless otherwise stated**

2nd July 11:00am Holy Communion In person only  
9th July 11:00am Morning Prayer In person only  
16th July 11:00am Holy Communion In person only  
23rd July 11:00am Morning Prayer In person only  
30th July 10:30am Joint Service Methodist Church

OPEN DAILY 10am - 4.00pm for visitors, contemplation & Foodbank donations

CHURCH CLEANING: TUE 11th JULY 10:00am, WITH COFFEE AND CHAT

COFFEE MORNINGS 10:00 - 12:00  
TUE 4TH JULY: HOST - CAROL & PETER WHEATLEY  
29 HIGH STREET COLSTERWORTH

TUE 1ST AUGUST : HOST - CHRISTINE & PETER BALDOCK  
41 COLSTERWAY COLSTERWORTH

For more information on services, or the church, please see social media, our website [www.colsterworth5.org.uk](http://www.colsterworth5.org.uk) or the Church Warden.

**Mobile Post Office**

Stopping by Colsterworth Bowls Club

Mon 0900 - 1100  
Tue 0900 - 1000  
Wed 1345 - 1545  
Thu 0900 - 1100  
Fri 0900 - 1030

Contact Andy on 01778 570221



**NORTH WITHAM VILLAGE HALL**

Contact Jane Hawksworth on 07778 393872, [north.witham@gmail.com](mailto:north.witham@gmail.com) for Village Hall matters and bookings

**Call Connect**

Lincolnshire's on demand bus service  
find more information at: <https://lincsbus.info/callconnect/>

**AN ADVERT THIS SIZE COSTS ONLY £119 FOR 12 MONTHS**  
[InTouchCopy@gmail.com](mailto:InTouchCopy@gmail.com)

**Minister: Rev'd Neil Maynard,**  
142 Princess Drive,  
Grantham, NG31 9PY  
Tel: 01476 564191  
Email: [neil.maynard@methodist.org.uk](mailto:neil.maynard@methodist.org.uk)  
Village Contact:  
Pamela Harrison – 01476 861864



**COLSTERWORTH METHODIST CHURCH  
July 2023**

Our services will be in the church, however we will also be zooming 2 services a month from the building internet permitting. If you are interested in joining our services by zoom, please email [helenscorror@outlook.com](mailto:helenscorror@outlook.com) or phone 01476 860126 for more details.

Date	Time	Service	Preacher	Flowers
2 <sup>nd</sup>	10:30am	Morning Worship	Worship Leaders	Helen Scorrer
9 <sup>th</sup>	10:30am	Morning Worship	Rev'd Tim Morris	Betty Neal
16 <sup>th</sup>	10:30am	Morning Worship	Ian Thacker	Wendy Walsh
23 <sup>rd</sup>	10:30am	Holy Communion	Rev'd Neil Maynard at Skillington	
30 <sup>th</sup>	10:30am	United Service	Elaine Robinson	Margaret Winn

**Open Door Lunch – Wednesday 12<sup>th</sup> & 26<sup>th</sup> July 12 Noon – 1:30am**

Join us for a filled roll plus either a hot pudding or cake and lots of chat. We welcome people of all and no faith and of all ages to join us. Our book and jigsaw library will be available for you to browse and borrow from.

**Games/Craft & Chat Group – Wednesday 5<sup>th</sup> & 19<sup>th</sup> July – 2:00-3:30pm**

Bring your own craft along and join our group for a cuppa, a chat and maybe an opportunity to learn new skills. Or alternatively come and have a chat over a game of dominoes. Everyone welcome.

**Villages Diary July 2023**

Tue 4 <sup>th</sup>	10am-12 noon	Coffee Morning	29, High St, Colsterworth
	7:30pm	Parish Council	Methodist Church Hall
Wed 5 <sup>th</sup>	2-3:30pm	Games/Craft & Chat	Methodist Church Hall
Sat 8 <sup>th</sup>	2pm-4pm	Mini Fete	Methodist Church Hall
Mon 10 <sup>th</sup>	7:30pm	Garden Club	Colsterworth Village Hall
Wed 12 <sup>th</sup>	12-1:30pm	Open Door Lunch	Methodist Church Hall
Tue 18 <sup>th</sup>	2:00pm	WI	Sports & Social Club
Wed 19 <sup>th</sup>	2-3:30pm	Games/Craft & Chat	Methodist Church Hall
Wed 26 <sup>th</sup>	12-1:30pm	Open Door Lunch	Methodist Church Hall
Fri 28 <sup>th</sup>	12:45-13:15	Mobile Library	Colster Way
<b>August</b>			
Tue 1 <sup>st</sup>	10am-12 noon	Coffee Morning	41, Colster Way, C'worth

**Weekly**

<b>Mondays</b>	10am-noon	<b>Kurling</b>	Village Hall
	7:15pm	<b>Bell Ringers</b>	Church
<b>Tuesdays</b>	9:30am-11:30am	<b>Parent &amp; Toddler Group</b> (Term time)	Village Hall
	6pm-7pm	<b>Yoga</b>	Methodist Church
	6pm-7:30pm	<b>Cubs</b> (Term time)	Village Hall
	5:45pm-6:45pm	<b>Beavers</b> (Term time)	Village Hall
<b>Wednesdays</b>	12noon-1:30pm	<b>Open Door</b> (2 <sup>nd</sup> & 4 <sup>th</sup> Weeks)	Methodist Church
	2pm-3:30pm	<b>Craft &amp; Chat</b> (1 <sup>st</sup> & 3 <sup>rd</sup> Weeks)	Methodist Church
<b>Thursdays</b>	10am-noon	<b>Kurling</b>	Village Hall
	7pm-8:30pm	<b>Scouts</b> (Term time)	Village Hall
<b>Fridays</b>	7:30pm-9:30pm	<b>Weekly Bingo</b>	Sports & Social Club
<b>Saturdays</b>	10am-12noon	<b>Football Coaching</b>	Sports Field

**Copy for next month's issue of In Touch must arrive by noon on Friday 14th July 2023**

Email contributions to [InTouchCopy@gmail.com](mailto:InTouchCopy@gmail.com)  
The deadline date is final and copy may not be included if there is a shortage of space. Please submit your copy as early as possible.  
Images and/or artwork submitted in digital formats **MUST** be at a resolution of 300dpi.  
Ensure that you put your contact details on any submission.  
Send or deliver hard copy to 5 Stephenson Close, Colsterworth NG33 5GP (Tel:07773 230815).  
Remember to give dates of future meetings if you want them to appear in the Villages' Diary.  
The Publishers accept no responsibility for goods or services advertised for sale in this magazine. The acceptance of advertising does not in any way imply that the advertiser is endorsed by the Publishers.  
Published by Colsterworth and District Parish Council ©2023