



InTouch

www.colsterworthanddistpc.co.uk

News for the villages of Colsterworth, Woolsthorpe, Stainby, Gunby, North Witham and Lobthorpe

Edited by Stuart Whitcombe 5 Stephenson Close, NG33 5GP 0777 323 0815 InTouchCopy@gmail.com



In 2022, Her Majesty The Queen will become the first British Monarch to celebrate a Platinum Jubilee after 70 years of service. Get involved in celebrating Her Majesty's historic reign.

For more information on how to get involved go to <https://platinumjubilee.gov.uk/get-involved-with-the-platinum-jubilee/>

The Queens Green Canopy

The Parish Council are taking part in the Queens Green Canopy and the Nature Trail volunteers have already cleared an area ready to plant the trees donated by the Woodland Trust and thank you to Mr Ian Rose who has donated an Oak tree which he has grown from seed.

Queen's Platinum Jubilee Beacons

The Parish Council is looking at how to celebrate the Queen's Platinum Jubilee including possible options for a Platinum Jubilee Beacon, for updates please see the Parish Council Meeting Minutes <https://colsterworth.pariah.lincnshire.gov.uk/downloads/download/7/agendas?downloadID=7>

To avoid events clashing if anyone is already planning an event could they let Sue Grant, Clerk to the Parish Council know either by email; clerk@colsterworthanddistpc.co.uk or telephone: 01476 861888.



Celebrate Valentines
at
The White Lion

11th - 14th February

Special menu available all day

Book now 01476 861466

Colsterworth Sports & Social Club

Weekly bingo will be held
on a Thursday evening from

4th February

Doors open 7pm

Eyes down 7:30pm

Gainsborough Corner Garage
- established 1993 -
will collect and deliver your vehicle
from Colsterworth and around.

Cars & Light Commercial
Servicing Repairs
MoT testing Recovery
AirCon service and repair

Troublesome code lights & diagnostics
Free courtesy vehicle

GAINSBOROUGH CORNER GARAGE

South Parade Business Park
South Parade
Grantham NG31 6HT
01476 575577



White Lion

High Street, Colsterworth

01476 861466

www.whitelioncolsterworth.co.uk/

**Open again on Mondays
from the 14th February**

Closed on Tuesdays

All 6 Nations Rugby Matches

live at

The White Lion



Thorold and Kent

TV Aerial Specialists

We Specialise in Aerial Installations

- Freeview Upgrades
- Satellite Installations
- Radio Aerials - FM and DAB
- Storm Damage Repairs
- All Work Guaranteed



Call in or Telephone 01476 571507

78 Bridge End Road, Grantham

PIANO, KEYBOARD AND FLUTE LESSONS

VANESSA JACKSON
BA HONS/PGCE
EXPERIENCED TEACHER
DBS CHECKED

MOB. 07857 810518

email vanessajackson@outlook.com
Online lessons available

CJB PLUMBING & HEATING

- Bathroom design and installation
- Gas - Installation, repairs, and servicing
- Underfloor heating
- Unvented cylinders

For all your plumbing and heating needs

Please call: 07957546069

or Email: cjbplumbing1@icloud.com



APHRODITE

Professional Hair Stylist

LOUISA SALTER

Mobile & Salon

07902615752

Email: louisa.salter@gmail.com



GRAPHIC DESIGN

LOGOS | LEAFLETS | POSTERS
MENUS | BROCHURES | ADVERTS
INVITES | CAMPAIGNS | PRINT MANAGEMENT

Get in touch and see
how we can support you

email: louisa@life-in-pictures.com
Tel: 01476 861703 www.life-in-pictures.com

Parish Council Report

Parish Clerk - 01476 861888
clerk@colsterworthanddistpc.co.uk

There was no Parish Council Meeting in December 2021. There will be a full report following the February Parish Council Meeting on Tuesday 1st February 2022. This gives us an opportunity to use this month, "In Touch" to explain a bit more about your Parish Council. Elected Parish Councils were first established in the Local Government Act 1894 to reinvigorate local communities and give them a voice. Since then, Parish councils have remained largely unchanged. It is not unusual for seats on Parish Councils to be uncontested, and for members to be co-opted where the number of candidates is fewer than the number of seats available.

Currently there are 15 seats on the Colsterworth & District Parish Council covering the villages of Colsterworth, Woolsthorpe by Colsterworth, North Witham and Gunby, Stainby and Lobthorpe. If you are interested in becoming a Councillor, please contact the Parish Clerk.

Your Parish Councillors are unpaid volunteers who represent the residents of the Parish

Name	Constituency
C Hainsworth - Chairperson	Stainby
E O'Neill - Vice Chairperson	Colsterworth
G Henton	Colsterworth
L McShane	Colsterworth
L Bennett	Colsterworth
I Johnson	Colsterworth
K Vickers	Colsterworth
A Bouvie	Colsterworth
C Russell	Colsterworth
T Neale	Colsterworth
Vacancy x 2	Colsterworth
J Clark	North Witham & Gunby
R Brocklebank	North Witham & Gunby
Vacancy x 1	Stainby

Sue Grant is the part-time Parish Clerk and is the contact point for all matters relating to the Council. She can be contacted at: clerk@colsterworthanddistpc.co.uk Tel: 01476-861888

Parish Council's Responsibilities Council Meetings

The Parish Council meets on the first Tuesday of every month at 7.30 p.m. except in January and August when there are no meetings. Before the meeting a public forum is held at which members of the public may speak. Notice of meetings and agendas are posted on notice boards and Minutes will also appear on this website. <https://colsterworth.parish.lincolnshire.gov.uk/>

The Parish Council is Responsible for

Village Maintenance

The Parish Council has the responsibility for parts of the villages' maintenance, such as grass cutting, repairing notice boards and bus shelters in the villages.

Allotments

There are allotments at Stamford Road and Woolsthorpe Road. It is very rewarding when you see your own fruit and vegetables growing – taste the difference! Contact the Parish Clerk on 01476 861888 and see if there is one available or place your name on the waiting list.

Play Areas

The Council maintains the Play Areas at Colster Way, Woolsthorpe Road, Newton Grange and by North Witham village hall

Old Post Lane Cemetery

The management of the Old Post Lane cemetery includes the provision of burial plots and maintenance.

Defibrillators

The Council maintains the five defibrillators which are located :- 1. Outside the White Lion Public House. 2. Outside Colsterworth Village Hall. 3. Woolsthorpe Road, in the old telephone kiosk. 4. Outside Little Legs premises on Colster Way. 5. Outside North Witham Village Hall.

Finance

The Council has the authority to raise a precept to finance its expenditure.

Traffic and Highways

The Parish Council would like regular contact with LCC Highways to try and resolve speeding, maintenance, signage and other problems (also in consultation with the Police)

Policing and Crime Prevention

The Council is active in working with the Police in reducing and preventing crime in the villages.

Clearing Litter

Two part-time Litter-pickers are employed to keep the villages tidy.

Planning

The Council is a statutory consultee in planning but has no decision-making powers.

Parish Plan

The implementation of the Parish Plan is a high priority.

Footpaths and Rights of Way

The Council is active in having footpaths and rights of way kept open and clear.

Grants

Grants may be given for local groups but are proportionate to the number of people who would benefit.

Seats

The Council will consider the provision of seat that would benefit

parishioners.

War Memorial

The Council currently has a project to investigate restoration of the War Memorial.

Nature & Wildlife

The Council supports biodiversity projects in the Parish and particularly supports the Nature Trail on the old Railway Line.

Lincolnshire County Council is responsible for maintaining the county's adopted roads and footpaths. You can report a fault on the following website:

<https://fixmystreet.lincolnshire.gov.uk/> or if you are unable to report a fault online, call 01522 782070 (8am to 6pm, Monday to Friday).

South Kesteven District Council are responsible for many services including Planning and Building Control, Street Lighting, Bins Street Care and recycling, assisted bin collection service and much more. You can find out more information using the following website address: <http://www.southkesteven.gov.uk/> or telephone no; 01476 406080.

The Environment Agency - River and coastal maintenance programmes

The Environment Agency maintains a wide range of flood and coastal risk management (FCRM) assets, which reduce the risk of flooding to people and property. These assets include: embankments, pumping stations & flood gates. More information can be found on their website: <https://www.gov.uk/government/publications/river-and-coastal-maintenance-programme> Telephone: 03708 506 506. Incident hotline: Report an incident on 0800 80 70 60 (Freephone, 24 hour service). Details of call charges can be found on the GOV.UK website

GRIT BINS - REMINDER

Lincolnshire County Council grit bins are located at strategic junctions for use in icy conditions. The grit is there to be used on public highways and footways it is NOT for private use on householder driveways. <https://www.lincolnshire.gov.uk/transport-and-roads/highways-maintenance/grit-bins-and-snow-clearing/40614.article>

SKDC Planning Applications

S22/0006 - Proposed installation of a natural wildlife pond and alterations to previously converted barn including new courtyard landscaping. The Barn, Mill Farm Stables, Stainby Road, Colsterworth, Lincolnshire

SKDC Planning Approval

S21/2044 - Proposed two storey rear extension and single storey porch extension. Location: 44 High Street Colsterworth NG33 5NF

SKDC Planning Withdrawn

S20.0129 - Change of use of land from storage (B8) to establishment and operation of a concrete block manufacturing facility (B2) including erection of buildings, storage, landscaping and bund. Land To The South Of The A151 Colsterworth Grantham NG33 5JN. Withdrawn by applicant.



HELEN'S HELPING HANDS NEEDS THE HELP OF THE COMMUNITY



We are so lucky to live in such a close and caring community and there always seems to be somebody to help during times of need.

Unfortunately some are cut off and don't receive the help they maybe require due to their mental or physical health.

It's not always possible to reach everyone isolated but working together as a community I hope Helen's Helping Hands will be able to help as many vulnerable people as possible.

If you know of anybody who you feel would benefit from some support from HHH, please get in contact with me and hopefully between us we can improve the quality of lives and help those who need it reconnect with our amazing community.

Steve Bill - Telephone : 01476861399 or email : billsbanter@live.co.uk

Due to the Methodist hall being pre-booked for February 26th, we have moved our Coffee Morning to March 5th

Do you know anyone within our village who has struggled to venture out since the lockdown or doesn't see anyone for days on end, OR does this apply to you? If yes to any of the above then Helen's Helping Hands can help!

Myself and my amazing team of volunteers are setting up coffee and cake mornings to take place once a month to bring people in a similar situation together. It's a chance to meet up and chat with others including the HHH volunteers who worked so hard through the pandemic helping all those that needed it.

It's also an opportunity to discuss any worries or concerns with us as a team and we can hopefully provide additional help if needed.

FRESH BREWED COFFEE & HOMEMADE CAKES.

VENUE: METHODIST CHURCH, BACK LANE,

DATE: SATURDAY 5th MARCH - TIME: 10:00AM - 12 NOON.

CONTACT: STEVE BILL 01476 861399 or email: billsbanter@live.co.uk

LITES PC



IT Support and Training for Home Computer Users and Small Businesses

No local call out charges
30+ Years experience
Friendly and Efficient
Competitive pricing



Wireless & Network Setup
PC Maintenance & Repair
Tablet support & training
PC Training - ALL levels
Broadband configuration
IT Equipment Sales
Media conversion video/audio

01476 550604 / 07894 659479
www.litespc.co.uk info@litespc.co.uk

Quality Websites for Small Businesses and Organisations



Web Site Design
Web Site Management
eCommerce Solutions
Facebook/Twitter Business Setup
Search Engine Optimisation
Web Design Training
Cloud Storage & Backup Setup

Free web site design consultations for local businesses



Assistance with using and configuring multiple devices for email and data sharing

GLENSIDE COUNTRY PRACTICE

A RURAL COUNTRY PRACTICE PROVIDING A FULL RANGE OF NHS AND PRIVATE SERVICES

- ! Surgeries at Corby Glen and Castle Bytham
- Open 8.30am-6.30pm - 5 days a week
- Opening until 7.30pm on Monday and Thursday
- Four Doctors and two practice nurses—hence more appointments every day
- Dispensary present at both surgery sites.
- ! Repeat medications available within 2 working days
- Online prescription ordering, appointment booking/cancellation and text reminder service for appointments
- Dedicated 24hr prescription ordering line Active patient participation group
- GP Survey 2014 showed 96% of patients were able to get an appointment to see or speak to someone the last time they tried

www.glensidecountrypractice.com

AN ADVERT THIS SIZE COSTS ONLY £114 FOR 12 MONTHS

InTouchCopy@gmail.com

Meadow Chimney Sweeping Services



Craig Groves
07803 127 437
01476 385 285
meadowchimneysweep@hotmail.co.uk
Colsterworth, Lincolnshire

Open Fires, Wood Burners, Gas & Oil Flues swept using latest powered technology & vacuumed

NEW WEBSITE **hp** NEW WEBSITE

Harrison Print

www.wgharrisonprint.co.uk
Unit 11, The Turnpike, Turnpike Close
Grantham, Lincolnshire, NG31 7DF
Tel 01476 562700 Fax 01476 562700
Email wgharrisonprint@btconnect.com

FOR ALL YOUR PRINTING REQUIREMENTS

STOP

Don't throw your PC through the window!

I'm Dennis and I can fix most hardware and software issues in your own home. And I'll sort out your internet and your networking problems too.

Call me on 01476 860139 or 07733 323 657

www.computetechnique.co.uk

MDF PLANT & LANDSCAPING



For all your garden improvements, Raised beds, Patios, Decking, Gravel Drives, Fencing, Turfing

All forms of groundworks – Drainage, Earth moving requirements etc Own Digger & Dumpster

Call Mark 07889 046430

For profile pictures please take a look at our facebook site MDF Plant Services & Landscaping

Garden Design Services and Planting also available.

KELLECTRIX

For All Your Electrical Needs

- Rewires
- Minor Works
- Security Lighting
- Intruder Alarms
- Extra Sockets
- Smoke Alarms
- No Job Too Small

Call Steve on 07809 220359 or 01476 501000 for a free quotation

COLSTERWORTH

Festival of Remembrance

Military Plaques Required

Have you ever served in the Armed Forces or have a family member that has in the past? If so then we would love your contributions to our military wall within the White Lion.

If you have any Unit, Division, Corps or Single Service plaque then we would love to see them placed on the village military wall.

Any donations to Madeleine or Dave.

This is in support of the Colsterworth Festival of Remembrance (CfOR).

Any questions to David Heath French at davidheathfrench@gmail.com



www.cfor.org.uk

theWI

INSPIRING WOMEN

Mr Martin Keely and Mr Shone, we thought that sounded like an entertaining music hall act, and my word they were certainly very entertaining. Who would have thought that a talk and demonstration of weaving willow into the most beautiful ornamental garden sculpture depiction of animals, birds and insects would keep us enthralled, but it did!

While son-in-law Martin demonstrated their art, father-in-law John did the talking, well most of it as he said that Martin couldn't talk and weave at the same time! Not quite true, but Martin took it on the chin, adding a word here and there as he made a butterfly and a fish on a line, which they generously donated to our raffle. Martin then completed a pheasant which he had started earlier. They said that if you had a pet dog, it was important that you keep the pheasant out of the way of your dog as they liked to pull at the tail "feathers" thinking that they were sticks to be returned. They spoke of the gardens where they had worked, demonstrations they do at agricultural shows and the harvesting the willow in the winter from various holts around the country. They displayed photographs of the various events and gardens on display boards. The title of their talk was "The Wonderful World of Willow". We thought that Martin and John were wonderful as they had stepped in when Richard Adams our scheduled speaker wasn't able to fulfil the engagement. We should have seen the "Dynamic Duo" last year, but like us, were in "lockdown" when the nation stopped to let the virus sweep through from shore to shore. It has taken its time hasn't it?

Vanessa thanked them for a most enjoyable talk and demonstration. We heartily recommend the gentlemen to any organisation or gardening club for a most entertaining demonstration, but you will want a bigger venue than the club's bar. There was no room for social distancing for us.

We were a bit short of space having been moved from our usual room from the lounge to the bar to accommodate a big outfit of all manner of wiring and speakers? We couldn't even find a table big enough for the business and more importantly one big enough for the refreshments. We did however find room for two new members, well, one was "returning to the fold" as also happened a few months ago. Back to business once refreshments were demolished (thanks ladies they were delicious). We heard that our entry for the quiz afternoon and tea has been in vain. The event has been cancelled. Also getting the chop is the Resolution discussion with lunch, but it will be transmitted on zoom and a case of feed yourself at home. But we have received the tickets for the visit to the Newark theatre in the spring.

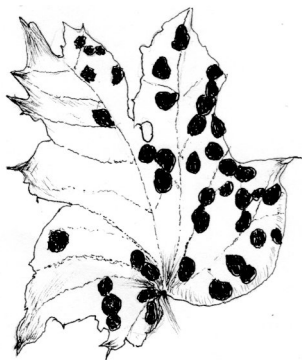
Hopefully our application to visit the Holocaust museum at Newark will not suffer the same fate as the quiz, and be cancelled. It too had been moved from last year. The Lincolnshire show schedule was of great interest, it looks as though we will have another go after our near miss last time.

Our flower of the month competition was won this month by Helen Scorrer – no runners up this time, (I shouldn't have had pity on my viola loving pigeon, and picked one to enter the competition. I could have been the runner-up). Competition winner for an item initial Q was won by Noreen Tomes with a quill pen in the ink pot. Runner up was Liz Clark with another quill, this was mounted in a silver holder. Both were very beautiful.

Next month's guest speaker is Michaela Kelly with a talk entitled "My Life as an Artist". Competition is an item coloured silver so if you want to enter, then you need to bring it along to the Sports and Social Club on February 15th at two o'clock. There will be a warm welcome for you (and your entry) hopefully we will back in the big room, it really was a bit of a squash for our continuing to grow institute.

Dot Williams

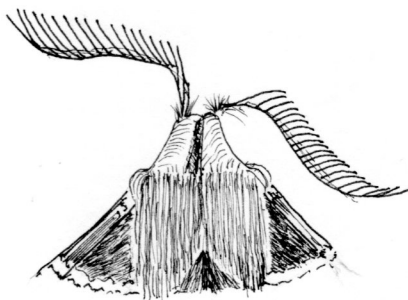
NATURAL HISTORY BULLETIN



Photographs of two kinds of fungi sent in this month illustrate the wide range of forms their fruiting bodies exhibit. They first appear as black spots on sycamore leaves and have the descriptive name 'Tar Spot'. The number of spots there are is an indication of how much sulphur dioxide there is in the air. When the level is low there is a denser covering. The Cooling towers alongside the River Trent don't now emit this as a waste product. There is now a denser covering of the fungi on our sycamore leaves. The second fungus, Candle Snuff, was found on some decaying wood. It is well named as its black spikes are topped with in ashy white, like a taper candle that has been snuffed out.

The very first records of flowering of Lesser Celandine, the native Snowdrop, and female flowers on the Hazel have come in. Bluebells are amongst the earliest of our woodland plants to spear their leaves up through the soil. From the start of their life as a seed which germinates below 10C through to the development of the bulb which digs deep on contractile roots they are the most aggressive of plants. Their tactics include a chemistry which allows them to elongate cells and photosynthesise in the cold and a fungal association which feeds them

and makes life in soil difficult for other plants. In the woods this produces the wonderful sheets of blue but they take over in gardens and in grassland.



That any moths at all are flying in the depths of winter is remarkable. Two kinds were found in a moth trap on December 14th – the Dark Chestnut and the December Moth. A third kind was discovered in January, the Chestnut, as well as another Dark Chestnut. And the photograph of them together was useful in comparing the difference between these closely related species. The December Moth was the most striking in appearance. Its various arrangement of reddish brown hairs doesn't show in a drawing. Instead a sketch has been made of its magnificent feathered antennae which are used to seek out the females. The first sighting of a Buff-tailed Queen Bumble Bee feeding on winter Honeysuckle this year was on 2nd January but with only one sighting since. Honey bees and the Hover Fly *Eristalis tenax* were seen on the same plant in the sunshine after frost on 19th January.



By the second week in January blackbirds were finally eating the rose hips which they leave until a late stage in their ripeness. The fieldfares were on the fallen apples and the redwings the haws. The drawing this month is of a goldfinch photographed feeding on a teasel growing near the back door where the plant had been left in the hope of attracting this species. The close ups show detail like the dark tip on the beak (1mm longer in the male) and the tiny seed in the birds beak. Though finches are becoming unusual at bird tables there are reports of large flocks of them in the Stainby area. Recent studies confirm 4 main ways to encourage garden birds. The first, because of the spread of infection, including one which has decimated finches, is to clean bird baths and feeders regularly. Secondly to install bird boxes, including artificial nests for house martins and swifts high up under the eaves (they will make a mess! The third is pleasant enough – to add insect friendly plants to the borders and pots. The fourth is not any easy one since the biggest threat to garden birds is cats – even their presence is a deterrent. The conflict can be reduced if cats are not put out early in the morning which is peak bird feeding time. They should carry a warning bell.

To Look For in February:

Courtship and territory defending will mean bird song. In addition to the wren and robin which sing all year the tits and the blackbird and song thrush are amongst the first. Butterflies which hibernate as adults may make an appearance on sunny days. And there will be new flowers and lengthening days. I look forwards to all your records and observations at 61 Woolsthorpe Road, 01476 860465, e-mail jnostler@hotmail.co.uk

Jane Ostler


THE garden SHED
 Made, Bespoke for You
 Soft Furnishings
 From Curtains; Roman Blinds; Cushions & more
 Call Amanda 07710 825820
amandafootitt@yahoo.co.uk
 Find us on facebook

D B Ostler Builder
 For all aspects of building work, from a new build to just a garden wall, undertaken by a father & son team call **861190 or 07759 411024**
Have Ostler – your local builder for over 20 years

Jubilee Garage (2016)

- ✓ Full and Intermediate Service.
- ✓ MOT £45 - No re-test fee.
Only £35 if booked with a full service.
- ✓ All aspects of mechanical work undertaken to cars & light commercial vehicles.
- ✓ Competitive tyre prices.
- ✓ Free local collection & delivery service.


CALL US ON 01476 860244
 The Bypass, Colsterworth

COLSTERWORTH PLUMBING LTD

- Gas Central Heating & Service
- Plumbing & Heating
- Bathrooms & Wet rooms
- Underfloor Heating
- Unvented Hot water


www.colsterworthplumbing.co.uk
 E: colsterworthplumbing@gmail.com
Call 07730357908

Call Connect
 Lincolnshire's on demand bus service
 find more information at: <https://lincsbus.info/callconnect/>

MOLE CONTROL

Is your garden being destroyed by Moles?
 Don't let it destroy your garden!
 Get in touch with Cliff for more info
cliffordbanks@sky.com
 07590819577 or 01476861862
 Based in Colsterworth, I cover all the local surrounding area



Nature Trail

Happy new year to everyone from the Nature Trail volunteers. Just want to give everyone a quick heads up about what we have been up to recently and will be doing along the Nature Trail in 2022.

We hope by now to have removed a large stand of blackthorn trees adjacent to our strawberry meadow and replaced them with a variety of native tree species kindly donated by the Woodland Trust. This will increase the diversity of plants along the trail and make the area a bit more accessible and interesting. It will, of course, take some time for them to mature into adult trees but it's an investment in the future. The Woodland Trust tell me the oaks will be fully mature in about 150 years. So we can all come back then and see how they got on.

The fly tipped rubbish that had accumulated over the years along the old quarry face will be removed shortly. We had hoped to remove it earlier, but the neat piles we had placed the rubbish into was quickly overgrown with nettles and we couldn't find them! Every day's a school day... With one exception the trail remains free of fly tipping and we would like to thank the efforts of the villagers for keeping it like that.

We have had a bit of a Bluebell planting session recently and I would like to thank all those who have kindly donated to this initiative. This includes, as ever, Madeline at the White Lion, June Jessop and Santa's elves who, ably supervised by Ellie Jennings and Charlotte Lucas, donated money collected by Santa's sleigh at Christmas.

Attractive views North across the fields at the western end of the trail can now be enjoyed from the new path cut through the trees above the flower meadow and we hope to be able to install benches there soon. Creating this new path allowed the volunteers to closely examine the natural wonder that are wasp nests. More closely than we intended actually, so these were kindly removed by Brian Harsley (Bob the Bee Man) after Ian Thorpe's attempt to remove them a dozen at a time inside his socks proved unsuccessful.

Christmas passed with what has now become the traditional bauble event. Hilary and her team of elves and children making the 'tunnel' look fantastic adorned with hundreds of Christmas decorations. Some of the volunteers also came out to help decorate the trees in the churchyard, with the general opinion being that the middle tree was the more attractive of the three.

See you on the trail. *Mo Taylor*



It's Time to Talk About Dog Poo! AGAIN!

To the responsible dog owners that pick up and dispose of their dog's poo either by taking it home or depositing it in one of the dog waste bins provided by the Parish Council, a big thank you. 😊

To those dog owners that do not pick up their dogs poo and leave it on the footpaths, roads, Nature Trail and other open spaces, PICK IT UP and take it home or deposit it in one of the dog waste bins provided by the Parish Council which are situated in the following locations.

Old Post Lane junction Water Lane

West End of the Nature Trail

The Nature Trail behind Woolsthorpe Play Area

Footpath 18 near river

Stamford Road near allotment

School Lane where it meets footpath 20

- **Always use a proper dog waste bag and if the dog waste bin is full, please take your bag of poo home and deposit in your own bin.**
- **Do not leave dog poo bags on the ground by a bin. It is not fair to expect our Community Cleaners Mark and Kevin to pick these up for you.**
- **Did you know that Kevin and Mark physically remove the heavy-duty black bags containing the deposited dog waste from the bins and transport these bags in their own personal vehicle to a collection point.**
- **Do not make their job more difficult by leaving your dog waste bags on the ground.**
- **Finally, the dog waste bins are for dog waste only.**

Our Community Cleaners Kevin and Mark do a brilliant job do let us do our bit to help them.

FAMILY SHOPPER MONDAY - SUNDAY 7am - 10pm

Proud to serve Colsterworth

FAMILY ESSENTIALS

- 2 FOR £2
- ONLY 89p
- ONLY £2
- ONLY £3

Paypoint, Payzone, Lottery, Free Cash Machine, Hot Drinks, Drinks, Chilled Ready Meal, Veg, Dairy, Beer, Wine, Spirits, American Sweets, Pet Food, Household, etc.

TELEPHONE: +441476862164
 OPENING TIME: 7am to 10pm
 WEBSITE: www.familyshopper.com

Discover the Choice
 happy shopper

FAMILY SHOPPER

EweMove Sleaford & Grantham
 South Rated 5 Star By Local Sellers & Landlords

"Hi I'm Rachel, I'm here to help with your property needs."

To Get Your **FREE** Online Valuation Report
 Visit: www.EweMove.com/GranthamSouth
 Or Call 24/7: 01476 858 570

REVIVE Salons

Massage, Holistic's & Beauty Treatments by Sarah
 (with over 20years experience) in a warm, relaxing, quiet & scenic environment

Call or Text Sarah 0747043 1535

easton
 WALLED GARDENS

**Wills - Powers of Attorney - Trusts
 Funeral Plans - Probate**

- Colsterworth based
- Personal / friendly service
- Fixed Fair Prices

Contact Patrick now to book in your **FREE** consultation by:
 Video call – Telephone – Home/Office visit

My Life Law

07725 635008 or 0333 005 0072
 hello@mylifelaw.co.uk
 www.mylifelaw.co.uk

Safe to do business with
 Code Compliant

Affiliate Member of STEP

Sarah & Heidi's Doggy Daycare & Home Boarding

Puppy Play Dates
 Reactive Dog Support

£10-half day, £15-full day, £25-24 hrs
 Just 3.5 miles from Colsterworth
07896 737046

Decorating Services

**Wallpapering
 Painting**

Established For Over 20yrs
 City & Guilds trained

01476 861318
 07896 893962
 oliverwhittle@hotmail.com

IESUS

P W Plumbing & Heating

Oil Boiler: Servicing & repairs/ installation
 Bathroom: design & installation
 Oil Tank: Installation & removal of old tank

Full installation of heating systems

07801 496407 / 01476 861189

For all your plumbing needs

Clear Skin by Barbara

Waxing, CND Gel Nails, Lava Shell Massage, Hot Stones, Skin Treatments, Skin Workshops
 For latest offers, follow us on FB & Instagram

0770817713

6A 1st Floor, Back Street, Buckminster

Northgate Well-Being
 Your Health In Our Hands

Podiatry & Chiropody

Pauline Kelly
 Bsc Hons Podiaty MCoP

07977 575056

hcpc registered
 The Society of Chiropodists and Podiatrists

STEP BY STEP Professional Footcare

Delivered in your own home

Treatments Include:
 Ingrown toenails & Nail Cutting
 Fungal Infections
 Corn Removal
 Hard Skin Treatments
 General Foot care

Contact Sabine Today
 07753229992 or 01476 403147

Fully Qualified S.A.C. Dip. F.H.P

Now a Woodsure Ready To Burn approved supplier!

Seasoned hardwood logs

- 1 cubic metre: From £85
- 2 cubic metres: From £165
- 3 cubic metres: From £240
- 4 cubic metres: From £320

Kindling (12kg bag): £5 per cubic metre
 Stacking service: £16 per cubic metre

M: 07968 174905
WWW.WOODLANDGROUNDCARE.CO.UK
 Delivery included for all areas covered by In Touch

Castlegate Practice @ Buckminster

Mark Duffree
 M.Med.Sci. D.O.
 Registered Osteopath

Rowena Myrans
 BSc (Hons), MSc, MCSP, HCPC
 Physiotherapist

Buckminster Yard
 Buckminster
 Grantham
 Lincs NG33 5SB

Tel: 01476 590845
 Email: castlegateosteos@btinternet.com
 www.granthamosteopath.co.uk

KWR Seasoned Ready To Burn hardwood logs

Small net bags £6 (collection only)
 *Builders bag delivered £70 approx. 1m3 PLUS £10 deposit on bag

Small truck £120.00 2m3
 Large truck £180 3m3

*BB only delivered within a 5mile radius

Stacking service can be arranged @ £20pm3
 Email kate@kwrplanthire.co.uk
 07775770454 OR 01476861342

Pilates classes

Buckminster Village Hall

Wednesday mornings
 9:30am Beginners 11:00am Improvers

Improve posture Strengthen core
 Enhance joint flexibility Manage stress No sweat

Maximum of 7 per class so book your place to avoid disappointment

Michaela Forbes *mf*

Retired Physiotherapist and Pilates teacher

Contact details
 01778 571264
 e.mail mfphysio@hotmail.com

Little Legs Nursery Colsterworth

Opening hours Monday - Friday
 7am to 6pm

Nursery that offers full and part time care all year round.
 For babies from birth to 11 years old.
 Holiday club.
 Telephone 01476860053
 Email: littlelegsteam@hotmail.co.uk
 Or call in.
 2 Graduate Leaders
 Quality Care in a Welcoming Environment

Little Legs

Award Winning Home Help For The Elderly

Shopping, cooking, cleaning, meal preparation, dog walking and more...

DBS Checked and Insured
 01476 385 395
 www.farrowfriends.co.uk

Fosse Oil Heating Tanks

OFTEC registered oil tank installers
 All makes and models supplied & installed.
 Concrete bases constructed.
 Safe removal of old tanks.
 Fuel transfer service available.
 Free quotations.

Call Matthew Brown
07736925999
 Based in Colsterworth
 fosseoilheatingandplumbing@btinternet.com

**The Parish Church of
St John the Baptist Colsterworth**
The parish church of Isaac Newton and his family
Our church has been part of our community for
more than 1000 years, with a tower added 700 years
ago. Today it is part of a group of 7 rural parishes
along the A150th of Grantham. For enquiries
please contact either Rev'd Neil Griffiths or our
administrator, Jo Castro on 01529 410983.



Contacts

Rector	Rev. Neil Griffiths	860630
Church Warden	Peter Wheatley	07765 126402
Treasurer	Carol Wheatley	860579
Secretary	Peter Baldock	860293
PCC Members	Hazel Taylor	860605
	Hilary Winstanley	861160
	Derek Cox	07881 788247
	Simon Jowitz	07903 390151

In-person and livestreamed services for February in Colsterworth:

6 th February	11.00am All Together Worship 6.00pm Evensong	In-person only Blended worship
13 th February	11.00am Holy Communion	Blended worship
20 th February	11.00am Holy Communion	Blended worship
27 th February	11.00am Holy Communion	Blended worship

The church is OPEN DAILY 10.00am – 4.00pm. When visiting please consider registering using the QR code and hand sanitising. Masks must be worn for services.

Please continue to support the Foodbank if you can, regrettably there is still a need.

NEXT COFFEE MORNING: TUE 1st MARCH 10.00AM – 12.00, HOSTED BY ARTHUR MARSHALL AT 10 MEADOW CLOSE COLSTERWORTH

ADVANCE NOTICE:
2ND March 6.00pm Ash Wednesday Communion Blended worship
Colsterworth

For more information on services, or the church, please see social media, our website www.colsterworth5.org.uk or contact Rev'd Neil, or the Church Warden.

**FEBRUARY OPENING TIMES
COLSTERWORTH POLICE OFFICE
BACK LANE**

Thursday 3rd February 2pm - 4pm

Saturday 12th February 11am - 1pm

Friday 18th February 3pm - 5pm

Sunday 27th February 10am - 12 noon

**Steve Bill
Police Support Volunteer**

101

You are the eyes & ears of our Community.

Your actions help to keep crime levels low.

It's important to report ANY potential crime, unusual activity, anything suspicious.

Don't hesitate phone 101 and report.

Help to keep your
Neighbourhood safe.

**Remember 101 - non emergency.
999 - emergency**



**NORTH WITHAM
VILLAGE HALL**

Contact Jane Hawksworth on 07778 393872, north.witham@gmail.com
for Village Hall matters and bookings

**FOR HIRE
COLSTERWORTH VILLAGE HALL**

For your Party, Meeting, Conference,
Wedding Reception.

We offer Large Hall, Good Parking,
Kitchen, Performance Stage.
With Newly installed-Mood Lighting,
Free Wi-Fi.

Call Eileen 01476 860459

**Colsterworth
Sports & Social Club**

**Now Showing Sky & BT Sports
Function Room Available**
for Parties, Meetings, Receptions
Call Mick 07494 418231
for details, bookings

**Minister: Rev'd Neil Maynard, 142 Princess Drive,
Grantham, NG31 9PY**

Tel: 01476 564191

Email: neil.maynard@methodist.org.uk

Village Contact : Pamela Harrison – 01476 861864



February 2022

In February our first and third Sunday services in the month are on zoom and the remainder are in the church, please see below for details. If you are interested in joining our zoom service, please email helenscorror@outlook.com or phone 01476 860126 for more details.

Our services for February are:

Date	Time	Service	Preacher	Flowers
6 th	10:30am	Morning Worship	Rev'd Neil Maynard	On zoom
13 th	10:30am	Holy Communion	Rev'd Martin Smithson	Christine Hodson
20 th	10:30am	Morning Worship	Jenny Fytche	On zoom
27 th	10:30am	Morning Worship	Rowena Ward-Barrow	Cheryl Sutcliffe

Open Door - cuppa, cake and chat – Wednesday 9th & 23rd February 10 – 11:30am.

We will open from 10am – 11:30am for a **cuppa, cake and chat**. We would love to welcome back those who attended prior to March 2020 and also people attending for the first time. We welcome people of all and no faith to join us and of all ages. Our book and jigsaw library will be available for you to browse and borrow from.

Craft & Chat Group – Wednesday 2nd & 16th February – 2.00-3:30pm.

Bring your own craft along and join our group for a cuppa, a chat and maybe an opportunity to learn new skills.

Messy Church – Wednesday 9th February at 3:45pm – 5:00pm. For children of Primary School age (and their siblings) accompanied by a parent/carer. This is a churches together project led by Rev'd Neil Griffiths. For more details contact Neil on 01476 860630

Hall Hire – Our Church Hall is now reopen and is available to hire for meetings, children's parties, fitness classes, etc. Please contact Helen Scorrer on 01476 860126 for more details.

Mobile Post Office

Stopping by Colsterworth Bowls Club

Mon	0900 – 1100
Tue	0900 – 1000
Wed	0945 – 1545
Thu	0900 – 1100
Fri	0900 – 1030

Contact Andy on
01778 570221

Villages Diary February 2022

Tue 1st	10 - 12 noon	Coffee Morning	7 Walnut Grove, Colsterworth
Wed 2nd	2 - 3:30pm	Craft & chat Group	Methodist Church Hall
Wed 9th	10 - 11:30am	Open Door	Methodist Church Hall
	3:45-5:00pm	Messy Church	Methodist Church Hall
Fri 11th	1330 - 1415	Mobile Library	Colster Way
Tue 15th	2pm	Women's Institute	Sports & Social Club
Wed 16th	2- 3:30pm	Craft & chat Group	Methodist Church Hall
Wed 23rd	10 - 11:30am	Open Door	Methodist Church Hall

March

Tue 1st	10am - 12	Coffee Morning	10, Meadow Close, Colsterworth
Sat 5th	10 - 12 noon	Coffee Morning	Methodist Church

Weekly

Days	Time	Activity	Location
Mondays	10am-noon	Kurling	Village Hall
	1:30pm-3pm	Parent & Toddler Group (Term time)	Village Hall
	5.30-7pm	Brownies	Village Hall
	7.15pm	Bell Ringers	Church
Tuesdays	6-7pm	Yoga	Methodist Church
Wednesdays	11.30am-12.30pm	Vitality Movement and Music	Village Hall
	11am-1pm	Open Door (2 nd & 4 th Weeks)	Methodist Church
Thursdays	7.30-8.30pm	Bootcamp	Village Hall
	10am-noon	Kurling	Village Hall
	5.30-7pm	Beavers/Cubs (Term time)	Village Hall
Saturdays	7.30-9.30pm	Weekly Bingo	Sports & Social Club
	10am-12	Football Coaching	Sports Field

**Copy for next month's issue of In Touch must arrive by noon on
Friday 18th February 2022**

Email contributions to InTouchCopy@gmail.com

The deadline date is final and copy may not be included if there is a shortage of space. Please submit your copy as early as possible.

Images and/or artwork submitted in digital formats MUST be at a resolution of 300dpi.

Ensure that you put your contact details on any submission.

Send or deliver hard copy to **5 Stephenson Close, Colsterworth NG33 5GP (Tel:07773 230815).**

Remember to give dates of future meetings if you want them to appear in the Villages' Diary.

The Publishers accept no responsibility for goods or services advertised for sale in this magazine. The acceptance of advertising does not in any way imply that the advertiser is endorsed by the Publishers.

Published by Colsterworth and District Parish Council ©2020